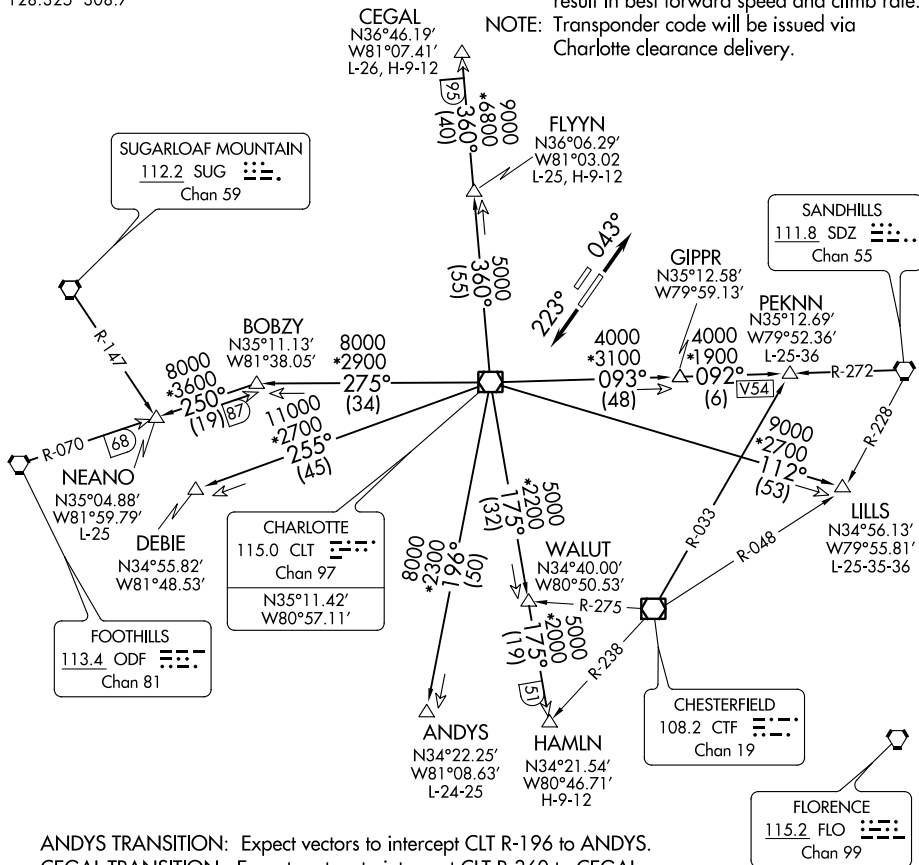


## KNIGHTS TWO DEPARTURE

**TOP ALTITUDE:**  
3000

NOTE: For propeller aircraft only.  
NOTE: RADAR and DME required.  
NOTE: Turboprops: Operate in a manner that will result in best forward speed and climb rate.  
NOTE: Transponder code will be issued via Charlotte clearance delivery.



ANDYS TRANSITION: Expect vectors to intercept CLT R-196 to ANDYS.  
 CEGAL TRANSITION: Expect vectors to intercept CLT R-360 to CEGAL.  
 DEBIE TRANSITION: Expect vectors to intercept CLT R-255 to DEBIE.  
 FLYYN TRANSITION: Expect vectors to intercept CLT R-360 to FLYYN.  
 HAMLN TRANSITION: Expect vectors to intercept CLT R-175 to HAMLN.  
 LILLS TRANSITION: Expect vectors to intercept CLT R-112 to LILLS.  
 NEANO TRANSITION: Expect vectors to intercept CLT R-275 to BOBZY then ODF R-070 to NEANO.  
 PEKNN TRANSITION: Expect vectors to intercept CLT R-093 to GIPPR then SDZ R-272 to PEKNN.

NOTE: Chart not to scale.

(NARRATIVE ON FOLLOWING PAGE)

SE-2, 31 DEC 2020 to 28 JAN 2021