

LOC I-VUJ	APP CRS	Rwy Idg	5499
110.55	223°	TDZE	584
		Apt Elev	609

ILS or LOC RWY 22L

STANLY COUNTY (VUJ)

ADF required.

⚠

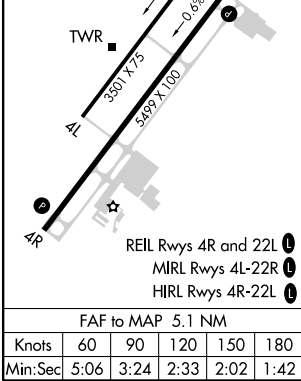
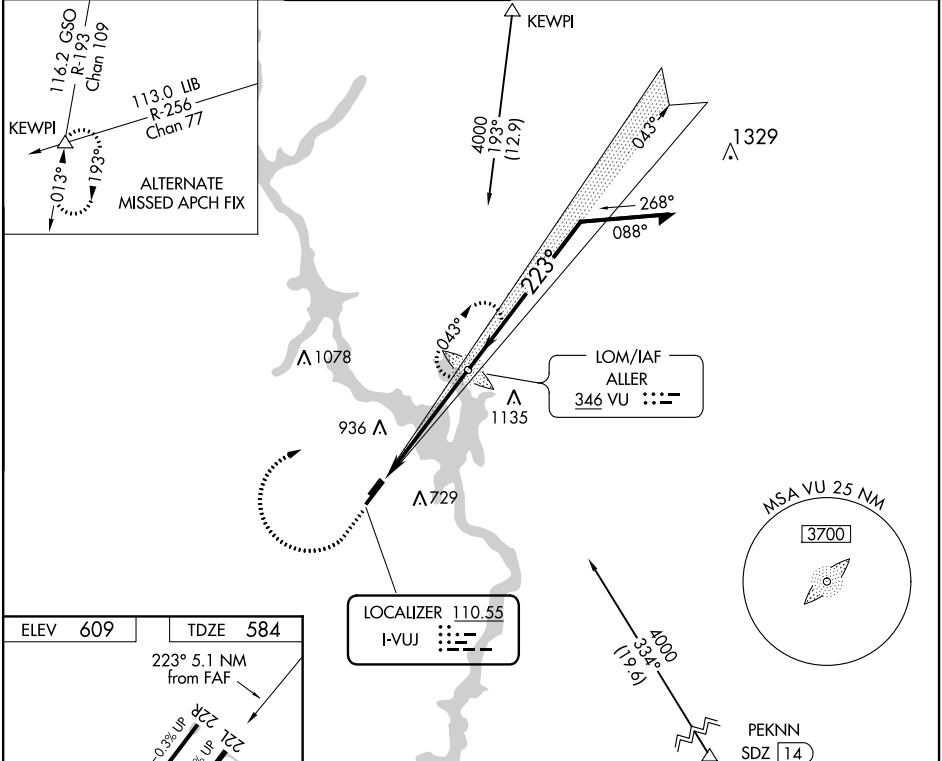
⚠

ASR/PAR

Circling Rwy 4L, 22R NA at night. When local altimeter setting not received, use Asheboro altimeter setting; increase DA to 953 and all visibilities 1/8 SM; increase all MDAs 60 feet and visibility Cats C and D 1/4 SM.

MISSED APPROACH: Climb to 1500 then climbing right turn to 4000 direct ALLER LOM and hold, continue climb-in-hold to 4000.

AWOS-3	CHARLOTTE APP CON	STANLY COUNTY TOWER*	GND CON	CLNC DEL	UNICOM
128.175	128.325 307.8	126.275 (CTAF) 0 291.9	121.75 254.375	121.75 254.375	123.0



1500	4000	VU	VU LOM	2255	043°	2600	Remain within 10 NM
					223°	2400	GS 3.00° TCH 40
					5.1 NM		
CATEGORY	A	B	C	D			
S-ILS 22L		900-7/8	316 (300-7/8)				
S-LOC 22L	1100-1	516 (500-1)	1100-13/8	516 (500-13/8)			
CIRCLING	1260-1	651 (700-1)	1260-13/4	651 (700-13/4)	1260-2	651 (700-2)	