

WAAS
CH **40221**
W16A

APP CRS
162°

Rwy Idg
TDZE
Apt Elev

5498
300
300

RNAV (GPS) RWY 16

ANSON COUNTY-JEFF CLOUD FIELD (A/F/P)

RNP APCH.

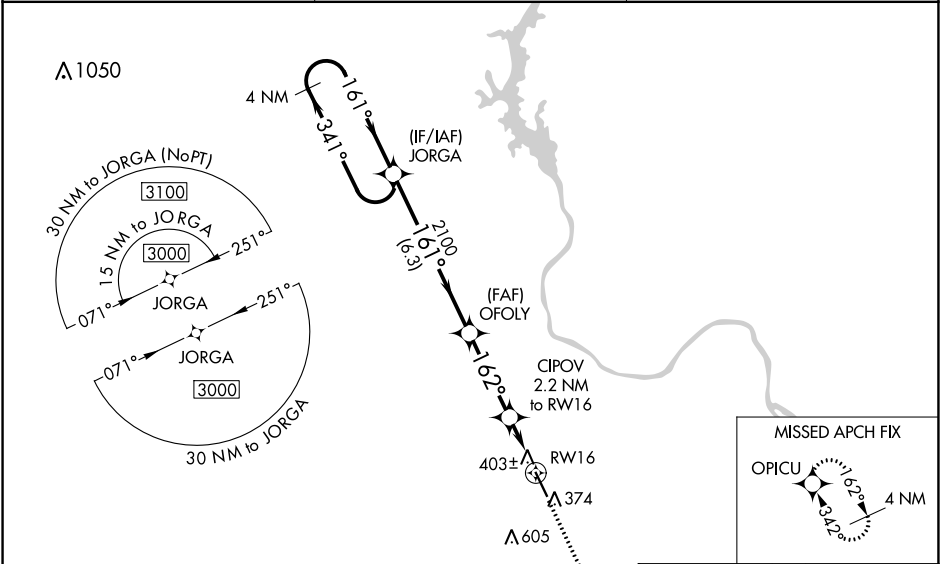
▼

▲

Procedure NA at night. Baro-VNAV NA when using Rockingham altimeter setting.
For uncompensated Baro-VNAV systems, LNAV/VNAV NA below -15°C or above 42°C.
Rwy 16 helicopter visibility reduction below 1 SM NA. When local altimeter setting not received, use Rockingham altimeter setting: increase LPV DA to 655 and LPV all Cats visibility ¼ SM; increase LNAV/VNAV DA to 634 and LNAV/VNAV all Cats visibility ½ SM; increase all MDA 60 feet and LNAV Cats C/D visibility ¼ SM.

MISSED APPROACH: Climb to 3000 direct OPICU and hold.

AWOS-3 119.325	CHARLOTTE APP CON 120.05 307.8	UNICOM 122.8 (CTAF) 0
--------------------------	--	---------------------------------



4 NM Holding Pattern

VGSI and RNAV glidepath not coincident (VGSI Angle 3.00/TCH 30).

3000

OPICU

GP 3.00° TCH 40

2100

CIPOV 2.2 NM to RW16

*1040

RW16

6.3 NM

3.3 NM

2.2 NM

CATEGORY	A	B	C	D
LPV DA		606-1	306 (400-1)	
LNAV/VNAV DA		585-1	285 (300-1)	
LNAV MDA		660-1	360 (400-1)	

ELEV 300

TDZE 300

162° to RW16

5498 X 100

34

MIRL Rwy 16-34 0

REIL Rwy 16 and 34 0