

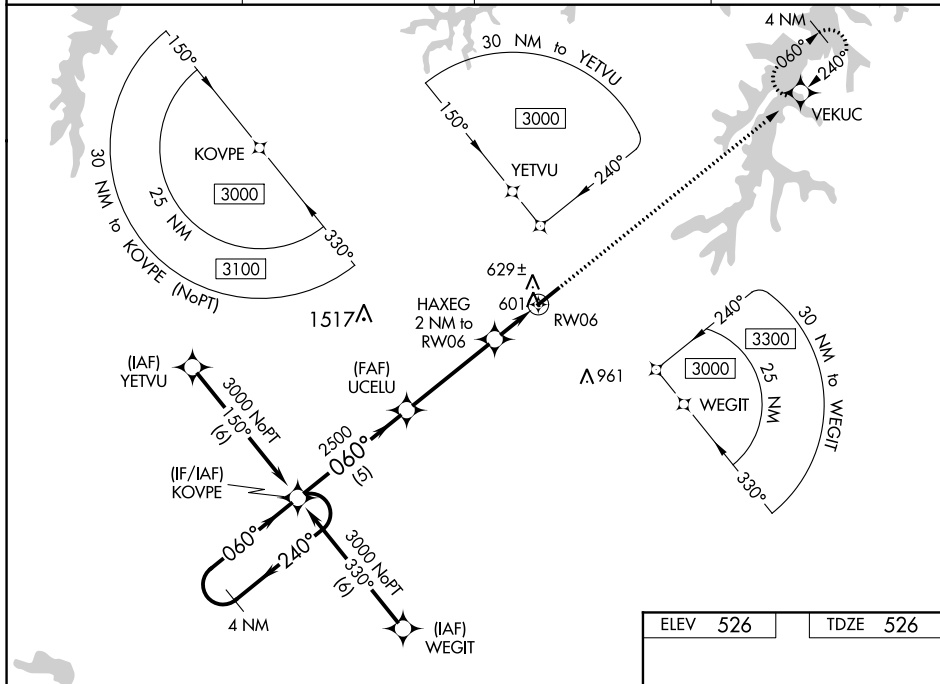
| | | |
|--|------------------------|---|
| WAAS CH 45709 W06A | APP CRS 060° | Rwy Idg 5500 TDZE 526 Apt Elev 526 |
|--|------------------------|---|

RNAV (GPS) RWY 6
HENDERSON-OXFORD (HNZ)

T For uncompensated Baro-VNAV systems, LNAV/VNAV NA below -16°C (4°F) or above 54°C (130°F).
A DME/DME RNP-0.3 NA. When local altimeter setting not received, use Roxboro altimeter setting and increase all DA 64 feet and all MDA 80 feet; increase LPV and LNAV/VNAV all Cats visibility ¼ mile, LNAV and Circling Cats C and D visibility ¼ mile. Baro-VNAV and VDP NA when using Roxboro altimeter setting. Helicopter visibility reduction below ¾ SM NA.

MISSED APPROACH:
Climb to 3000 direct
VEKUC and hold.

| | | | |
|--------------------------|--|-----------------------|--------------------------------|
| AWOS-3 118.625 | RALEIGH APP CON 132.35 256.9 | GCO 135.075 | UNICOM 122.8(CTAF) 0 |
|--------------------------|--|-----------------------|--------------------------------|



4 NM Holding Pattern

3000

240°

060°

060°

2500

1200

5 NM

4 NM

1.1 NM

0.9 NM

KVVU

UCEL

HAXG

RW06

VGSI and RNAV glidepath not coincident (VGSI Angle 3.50/TCH 27).

3000

VEKUC

*LNNAV only.

GP 3.00° TCH 53

2 NM to RW06

*0.9 NM to RW06

