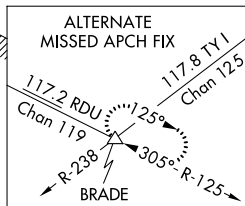


ILS Z or LOC Z RWY 3
JOHNSTON RGNL (JNX)

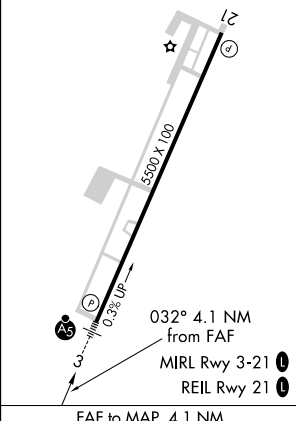
MISSED APPROACH:
Climb to 1000 then
climbing right turn to
1800 direct JN NDB
and hold.



UNICOM
122.725 (CTAF) **L**



ELEV	164		TDZE	147
------	-----	--	------	-----



Knots	60	90	120	150	180
Min:Sec	4:06	2:44	2:03	1:38	1:22

SE-2 31 DEC 2020 to 28 JAN 2021