

WAAS CH <b>62926</b> <b>W17A</b>	APP CRS <b>167°</b>	Rwy Idg <b>3012</b> TDZE <b>13</b> Apt Elev <b>13</b>
--	------------------------	---

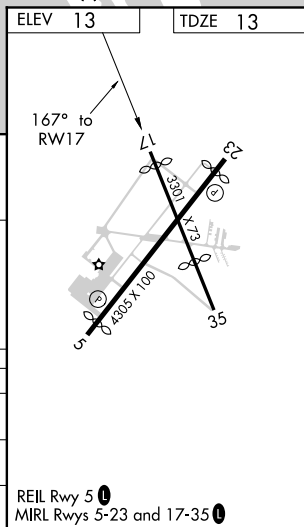
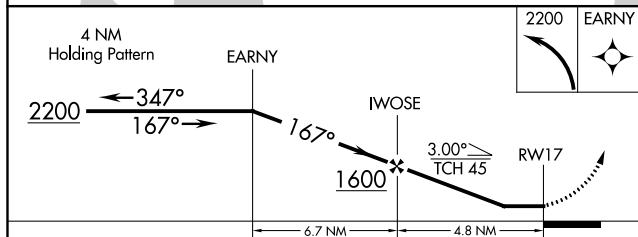
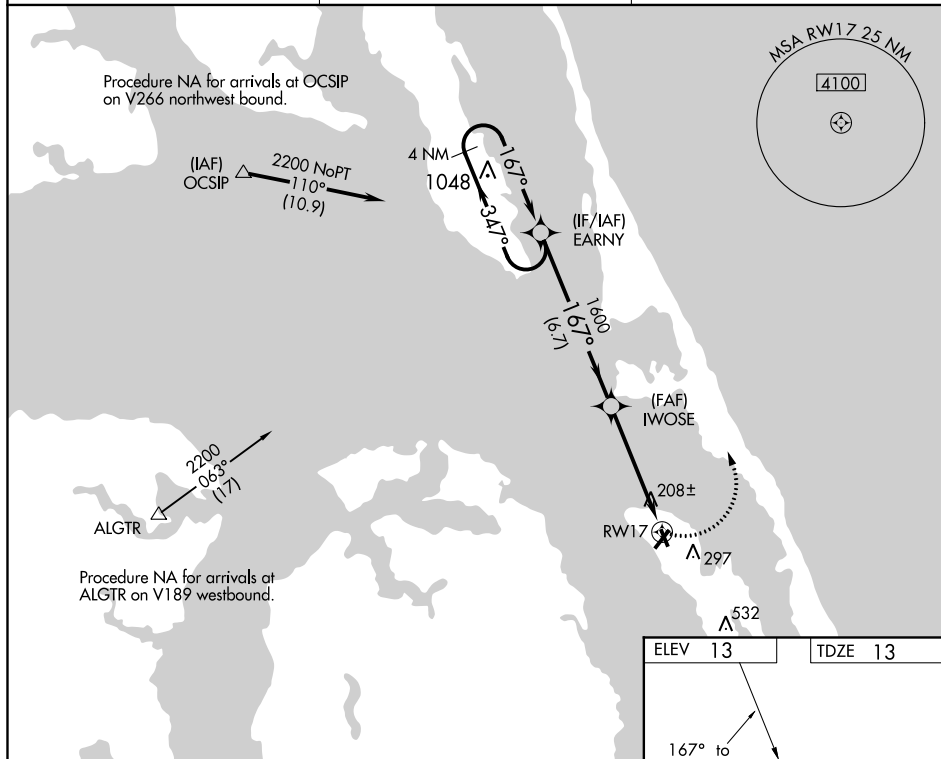
# RNAV (GPS) RWY 17

## DARE COUNTY RGNL (MQI)

**T** DME/DME RNP-0.3 NA. Helicopter visibility reduction below 1 SM NA.  
**A** Night landing Rwy 17 NA. When local altimeter setting not received use Elizabeth City altimeter setting and increase all MDA 80 feet; increase LP and LNAV Cat C visibility  $\frac{1}{8}$  mile and Circling Cat C visibility  $\frac{1}{4}$  mile.

**MISSED APPROACH:** Climbing left turn to 2200 direct EARNY and hold.

AWOS-3 <b>128.275</b>	CHERRY POINT APP CON <b>124.725 350.35</b>	UNICOM <b>122.8 (CTAF) 0</b>
--------------------------	---	---------------------------------



CATEGORY	A	B	C	D
LP MDA	460-1	447 (500-1)	460-1 $\frac{1}{8}$ 447 (500-1 $\frac{3}{8}$ )	NA
LNAV MDA	460-1	447 (500-1)	460-1 $\frac{3}{8}$ 447 (500-1 $\frac{3}{8}$ )	NA
CIRCLING	600-1	587 (600-1)	600-1 $\frac{1}{2}$ 587 (600-1 $\frac{1}{2}$ )	NA