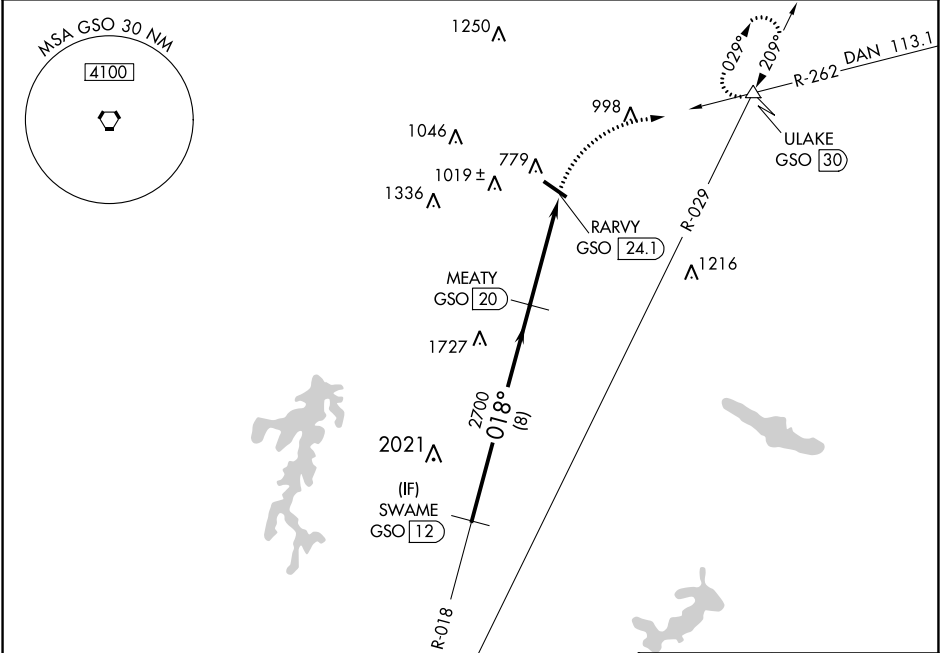


NA

Helicopter visibility reduction NA.  
Procedure NA at night.

MISSED APPROACH: Climbing right turn to 3100 via  
DAN VOR R-262 to ULAKE/GSO 30 DME and hold.

AWOS-3 119.775	GREENSBORO APP CON 124.35 269.225	UNICOM 122.8 (CTAF)
-------------------	--------------------------------------	------------------------



Procedure NA for arrivals on GSO  
VORTAC airway radials 337 CW 054.

