

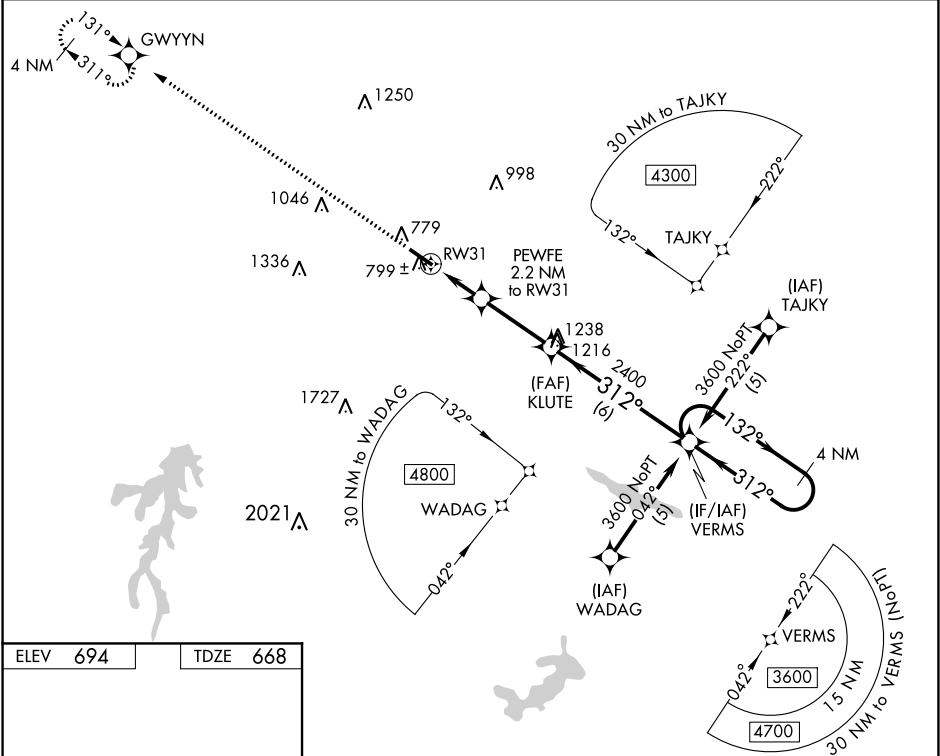


APP CRS 312°	Rwy Idg	5200
	TDZE	668
	Apt Elev	694

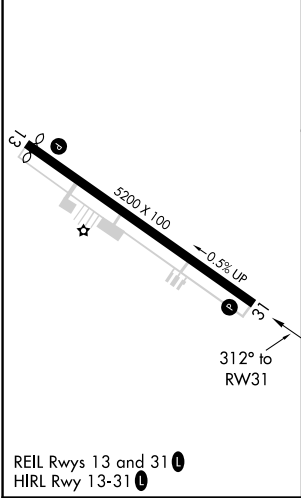
RNAV (GPS) RWY 31
ROCKINGHAM COUNTY NC SHILOH (SIF')

RNP APCH.		MISSED APPROACH: Climb to 3500 direct GWYNN and hold.
	Rwy 31 helicopter visibility reduction below 1 SM NA.	
	Procedure NA at night.	

AWOS-3 119.775	GREENSBORO APP CON 124.35 269.225	UNICOM 122.8 (CTAF) 0
--------------------------	---	---------------------------------



ELEV	694	TDZE	668
------	------------	------	------------



3500

↑

GWYNN

✧

VGSI and descent angles not coincident
(VGSI Angle 4.00/TCH 40).

KLUTE

VERMS

4 NM
Holding Pattern

PEWFE

2.2 NM to
RW31

3.04°
TCH 40

312°

132°

312°

3600

RW31

1400

2400

2.2 NM

3 NM

6 NM

CATEGORY	A	B	C	D
LNAV MDA	1060-1 392 (400-1)			1060-1¼ 392 (400-1¼)
CIRCLING	1280-1 586 (600-1)		1320-1¾ 626 (700-1¾)	1320-2 626 (700-2)

SE-2, 31 DEC 2020 to 28 JAN 2021

SE-2, 31 DEC 2020 to 28 JAN 2021