

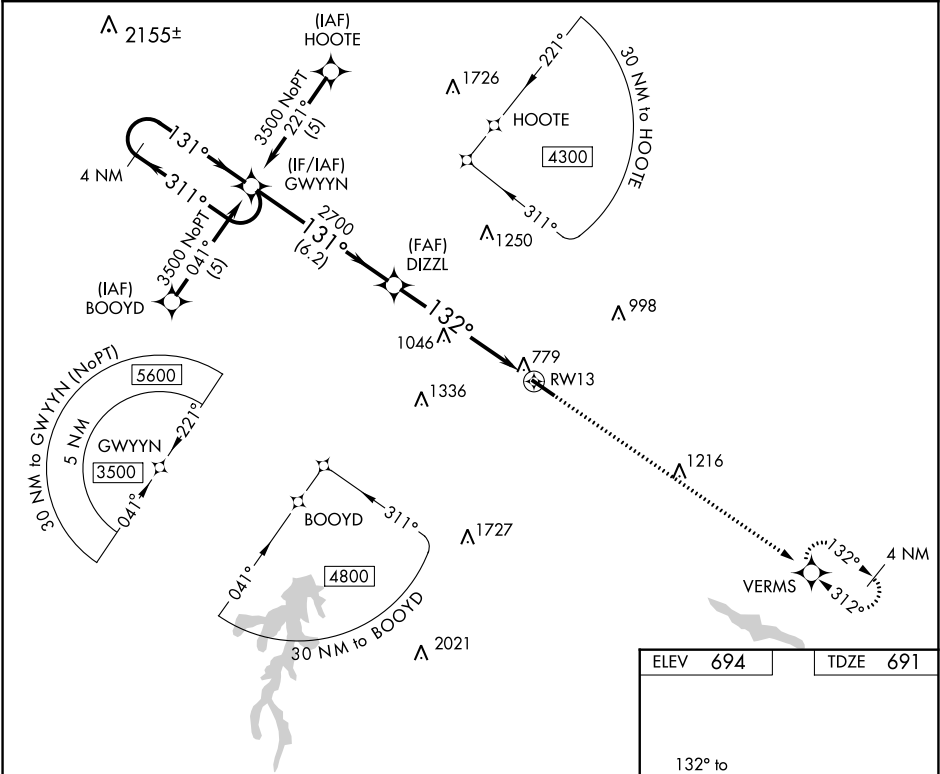
APP CRS	Rwy Idg	5000
132°	TDZE	691
	Apt Elev	694

RNAV (GPS) RWY 13

ROCKINGHAM COUNTY NC SHILOH (SIF')

RNP APCH.	MISSED APPROACH: Climb to 3600 direct VERMS and hold.
▼ Rwy 13 helicopter visibility reduction below 1 SM NA. ▲ Procedure NA at night.	

AWOS-3 119.775	GREENSBORO APP CON 124.35 269.225	UNICOM 122.8 (CTAF) 1
-------------------	--------------------------------------	--------------------------



<div>4 NM Holding Pattern</div> <div>3500 ← 311° → 131° →</div> <div>GWYYN</div> <div>VGSi and descent angles not coincident (VGSi Angle 4.00/TCH 33).</div> <div>DIZZL</div> <div>3600</div> <div>VERMS</div> <div>3.06° TCH 33</div> <div>2700</div> <div>131°</div> <div>132°</div> <div>RW13</div> <div>6.2 NM</div> <div>6.1 NM</div>					<div>RW13</div> <div>5200 X 100</div> <div>0.5% UP</div>	
CATEGORY	A	B	C	D		
LNAV MDA	1300-1	609 (700-1)	1300-1¾ 609 (700-1¾)	1300-2 609 (700-2)		
CIRCLING	1300-1	606 (700-1)	1320-1¾ 626 (700-1¾)	1320-2 626 (700-2)	REIL Rwy 13 and 31 ① HIRL Rwy 13-31 ①	

SE-2, 31 DEC 2020 to 28 JAN 2021

SE-2, 31 DEC 2020 to 28 JAN 2021