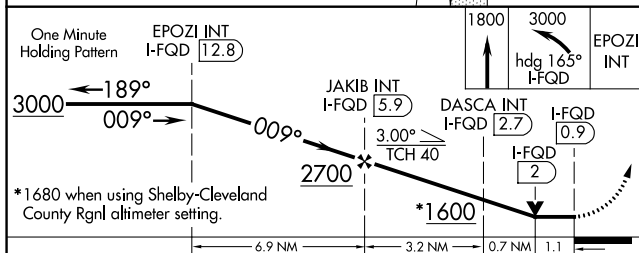


LOC RWY 1
RUTHERFORD COUNTY-MARCHMAN FIELD (FQD)

MISSED APPROACH: Climb to 1800 then climbing left turn to 3000 on heading 165° and on I-FQD localizer south course to EPOZI INT/I-FQD 12.8 DME and hold.

[illegible]

SE-2, 31 DEC 2020 to 28 JAN 2021

SE-2, 31 DEC 2020 to 28 JAN 2021