

WAAS CH 97628 W06A	APP CRS 058°	Rwy Idg TDZE 733 Apt Elev 733	5004
--	------------------------	---	-------------

RNAV (GPS) RWY 6

DAVIDSON COUNTY (E.XX)

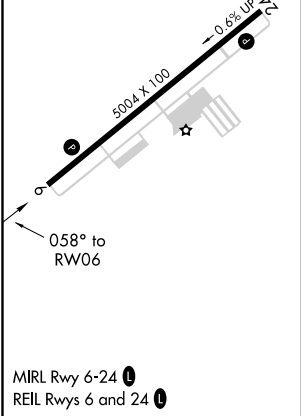
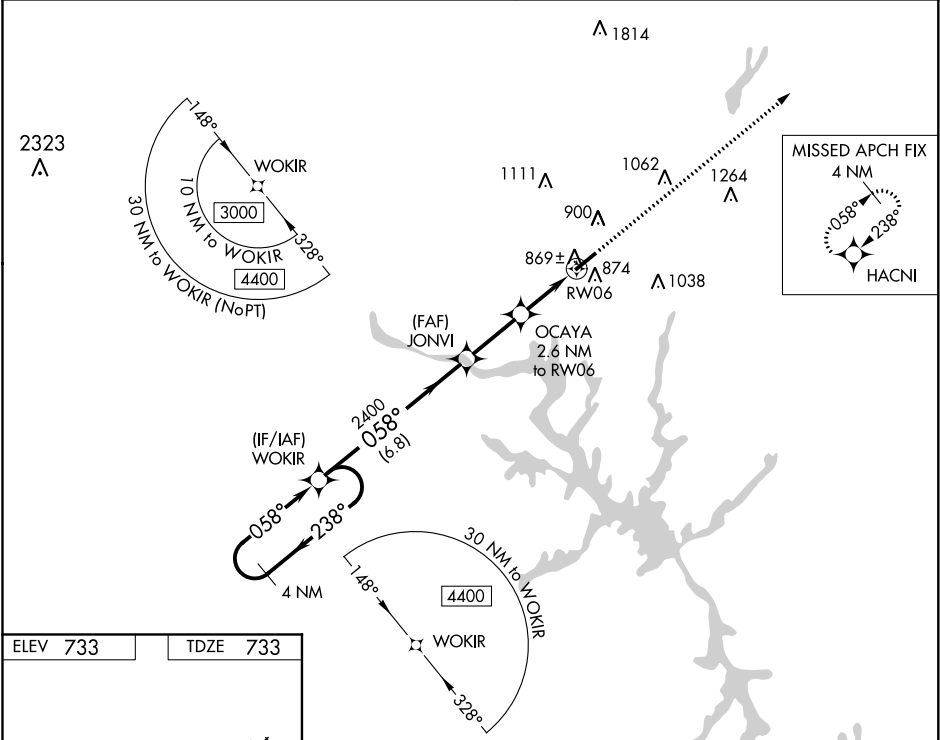
▼

▲

For uncompensated Baro-VNAV systems, LNAV/VNAV NA below -16°C (4°F) or above 54°C (130°F). When local altimeter setting not received, use Salisbury altimeter setting and increase all DA 37 feet and all MDA 40, increase LPV, LNAV/VNAV all Cats and LNAV Cat C visibility ½ mile. DME/DME RNP-0.3 NA. Baro-VNAV and VDP NA when using Salisbury altimeter setting.

MISSED APPROACH:
Climb to 3000 direct
HACNI and hold.

AWOS-3 119.825	GREENSBORO APP CON 126.6 327.075	GCO 135.075	UNICOM 122.8 (CTAF) 0
--------------------------	--	-----------------------	---------------------------------



4 NM Holding Pattern				WOKIR		JONVI		OCAYA 2.6 NM to RW06		3000		HACNI
GP 3.00° TCH 40				238° 058°		058°		2400		*1600		
				6.8 NM		2.5 NM		1.8 NM		0.8 NM		
CATEGORY				A		B		C		D		
LPV DA				983-7/8		250 (300-7/8)						NA
LNAV/ VNAV DA				1020-1		287 (300-1)						NA
LNAV MDA				1120-1		387 (400-1)		1120-1 1/8 387 (400-1 1/8)				NA
CIRCLING				1200-1		467 (500-1)		1220-1 1/2 487 (500-1 1/2)				NA