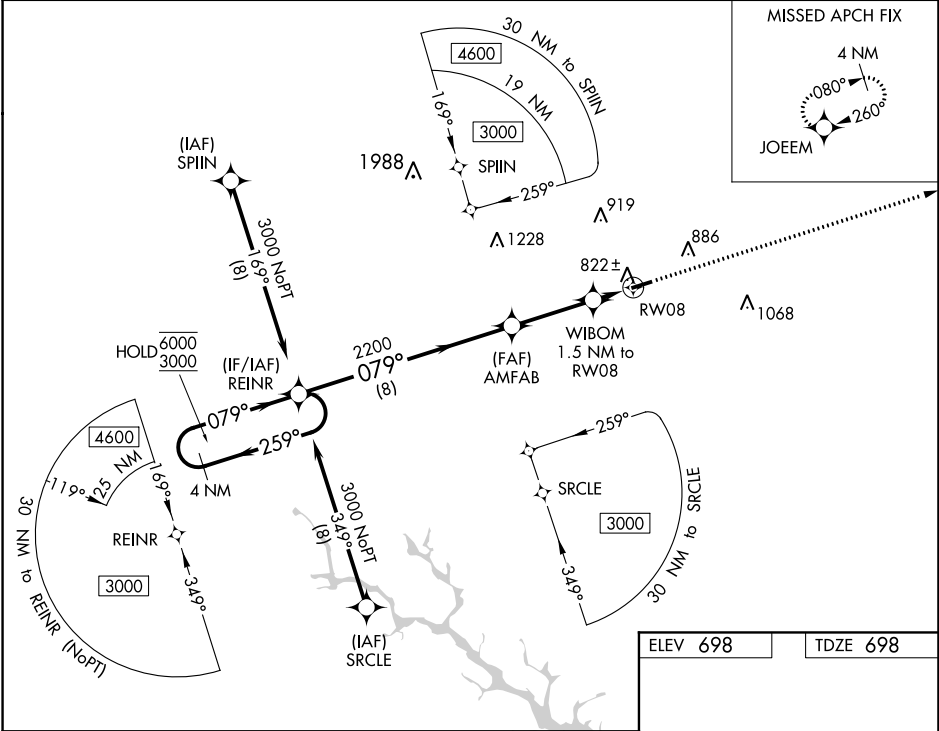


WAAS CH <b>72635</b> <b>W08A</b>	APP CRS <b>079°</b>	Rwy Idg TDZE <b>698</b> Apt Elev <b>698</b>	<b>4051</b> <b>698</b> <b>698</b>
--	------------------------	---	---

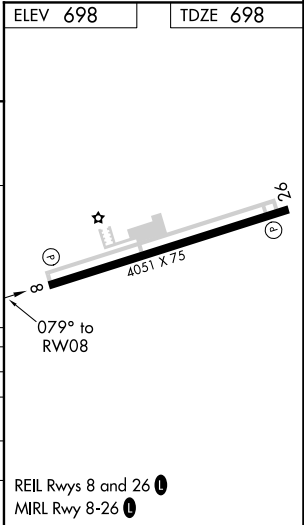
RNAV (GPS) RWY 8  
LAURENS COUNTY (LUX)

RNP APCH. ▼ Rwy 8 helicopter visibility reduction below ¾ SM NA. For uncompensated Baro-VNAV systems, LNAV/VNAV NA below -16°C or above 54°C.	MISSED APPROACH: Climb to 3000 direct JOEEM and hold.
---	---

AWOS-3 <b>123.975</b>	GREER APP CON ★ <b>120.6 350.2</b>	UNICOM <b>122.8 (CTAF) ①</b>
--------------------------	---------------------------------------	---------------------------------



4 NM Holding Pattern REINR		VGSI and RNAV glidepath not coincident (VGSI Angle 3.00/TCH 41).		3000 JOEEM
6000	3000	2200	1220	*RNAV only.
GP 3.00°	TCH 54	8 NM	3.1 NM	1.5 NM
CATEGORY	A	B	C	D
LPV DA	948-¾	250 (300-¾)	NA	NA
LNAV/VNAV DA	957-¾	259 (300-¾)	NA	NA
LNAV MDA	1080-1	382 (400-1)	NA	NA
CIRCLING	1200-1	502 (600-1)	NA	NA



SE-2, 31 DEC 2020 to 28 JAN 2021

SE-2, 31 DEC 2020 to 28 JAN 2021