

NDB EOE

278

APP CRS

213°

Rwy Idg

4001

TDZE

570

Apt Elev

570

NEWBERRY RWY 22

NEWBERRY COUNTY (EOE)

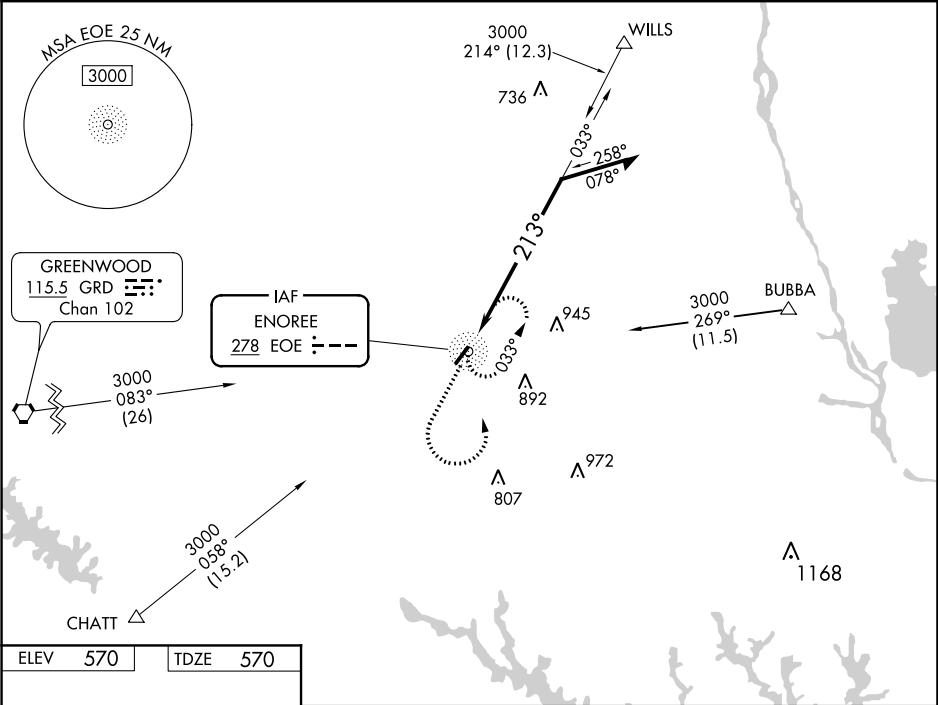
T

A

When local altimeter setting not received, use Greenwood County altimeter setting and increase all MDA 80 feet.  
Helicopter visibility reduction below ¾ SM NA.

MISSED APPROACH: Climb to 1800 then climbing left turn to 3000 direct EOE NDB and hold.

AWOS-3 124.275	COLUMBIA APP CON 133.4 285.6	UNICOM 122.8 (CTAF) <b>1</b>
-------------------	---------------------------------	---------------------------------



ELEV 570

TDZE 570

213° to EOE NDB

0.4% Up

4001 X.75

MIRL Rwy 4-22 **1**

1800

3000

EOE

EOE NDB

Remain within 10 NM

033°

213°

2500

CATEGORY	A	B	C	D
S-22	1100-1	530 (600-1)	NA	
CIRCLING	1100-1	530 (600-1)	NA	