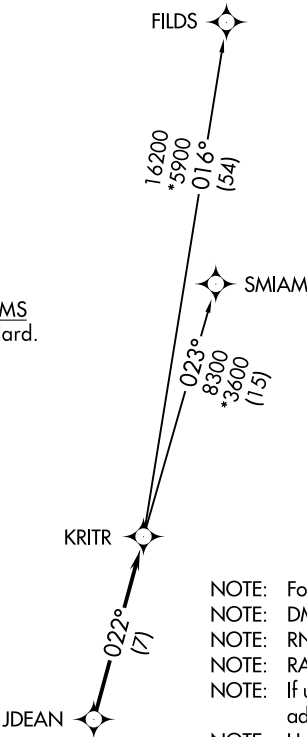


ASOS  
135.725  
CLNC DEL  
127.2  
UNICOM  
123.0 (CTAF)  
CHARLOTTE DEP CON  
120.05 257.2

TOP ALTITUDE:  
3000

TAKEOFF MINIMUMS  
Rwys 3, 21: Standard.



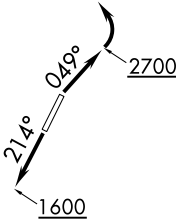
- NOTE: For turbojets only.  
NOTE: DME/DME/IRU or GPS required.  
NOTE: RNAV 1.  
NOTE: RADAR required.  
NOTE: If unable to accept climb rates, advise ATC on initial contact.  
NOTE: Upon reaching 10000 MSL, accelerate to and maintain 280K, if unable advise ATC.

DEPARTURE ROUTE DESCRIPTION

TAKEOFF RWY 3: Climb heading 049° to 2700 before turning left.  
TAKEOFF RWY 21: Climb heading 214° to 1600 before proceeding north.

Climb on heading assigned by ATC, expect RADAR vectors to JDEAN, then on track 022° to KRITR, then on assigned transition. Maintain 3000, expect filed altitude within 10 minutes after departure.

FILDS TRANSITION (KRITR5.FILDS)  
SMIAM TRANSITION (KRITR5.SMIAM)



NOTE: Chart not to scale.

SE-2, 31 DEC 2020 to 28 JAN 2021

SE-2, 31 DEC 2020 to 28 JAN 2021