

RNP APCH.

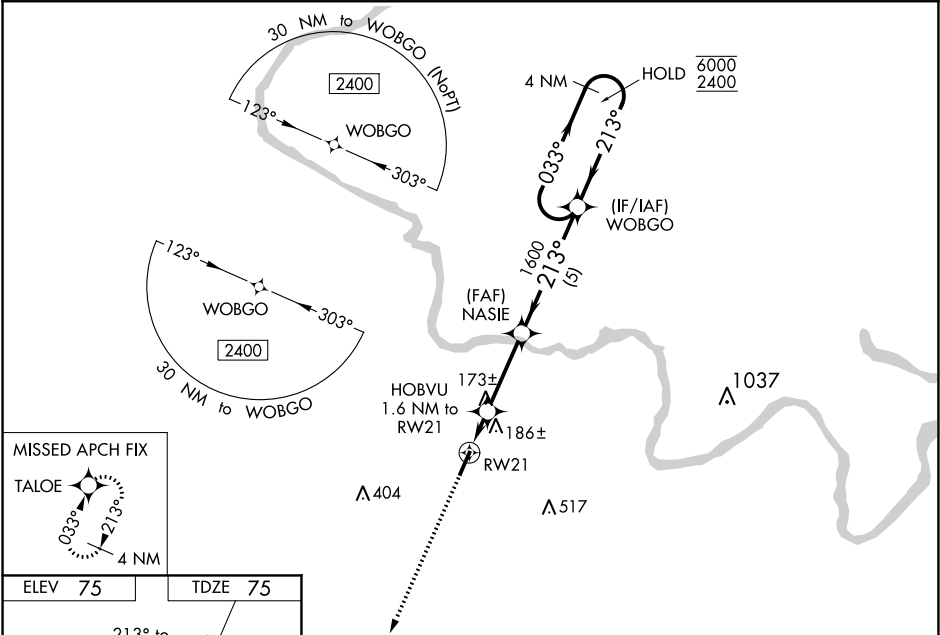
NA

Baro-VNAV and VDP NA when using Rocky Mount altimeter setting. For uncompensated Baro-VNAV systems, LNAV/VNAV NA below -15°C or above 54°C.

MISSED APPROACH: Climb to 2400 direct TALOE and hold, continue climb-in-hold to 2400.

WASHINGTON CENTER  
**123.85 279.65**

UNICOM  
**122.8 (CTAF) 0**



ELEV **75**

TDZE **75**

213° to RW21

21

5000 X 75

3

MIRL Rwy 3-21 0

2400 TALOE

VGSI and RNAV glidepath not coincident (VGSI Angle 3.00°/TCH 24).

\*LNAV only.

HOBVU 1.6 NM to RW21

NASIE 1600

WOBGO 4 NM Holding Pattern

033° → 6000

← 213° 2400

GP 3.00° TCH 45

1.1 0.5 3 NM 5 NM

640\*

1600

CATEGORY	A	B	C	D
LPV DA		380-1	305 (400-1)	
LNAV/VNAV DA		337-1	262 (300-1)	
LNAV MDA		440-1	365 (400-1)	
CIRCLING	500-1 425 (500-1)	540-1 465 (500-1)	680-1¾ 605 (700-1¾)	880-2½ 805 (900-2½)