

WAAS CH 93818 W17A	APP CRS 174°	Rwy Idg TDZE Apt Elev	5000 657 657
--	------------------------	-----------------------------	---

RNAV (GPS) RWY 17

CHESTER CATAWBA RGNL (DCM)

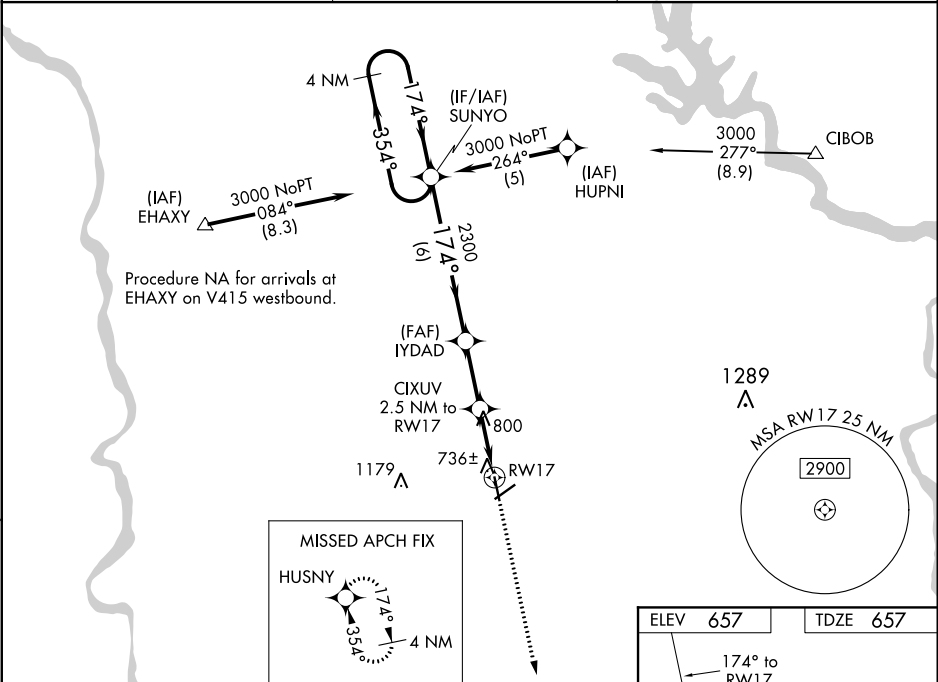
⚠

⚠

Circling to Rwy 5-23 NA at night. For uncompensated Baro-VNAV systems, LNAV/VNAV NA below -16°C (4°F) or above 47°C (116°F). DME/DME RNP-0.3 NA. Visibility reduction by helicopters NA. When local altimeter setting not received, use Rock Hill altimeter setting and increase all DA 33 feet and all MDA 40 feet and LNAV Cat D visibility ¼ mile. Baro-VNAV and VDP NA when using Rock Hill altimeter setting.

MISSED APPROACH:
Climb to 3000 direct HUSNY and hold.

AWOS-3 120.975	CHARLOTTE APP CON 120.05 307.8	UNICOM 122.7 (CTAF) 0
--------------------------	--	---------------------------------



4 NM Holding Pattern		SUNYO		IYDAD		CIXUV		RW17	
3000		174°		2300		2.5 NM to		1.1 NM to	
GP 3.00°		←354°		174°		RW17		RW17	
TCH 34				2300		*1.1 NM to		RW17	
				*1480					
		6 NM		2.5 NM		1.4 NM		1.1	
CATEGORY		A		B		C		D	
LPV DA		907-1		250 (300-1)					
LNAV/VNAV DA		1134-1¾		477 (500-1¾)					
LNAV MDA		1060-1	403 (500-1)	1060-1¼		403 (500-1¼)			
CIRCLING		1160-1	503 (600-1)	1160-1½		503 (600-1½)	1220-2	563 (600-2)	

