

WAAS CH 70536 W25A	APP CRS 255°	Rwy Idg TDZE 1065 Apt Elev 1067	4001
--	------------------------	---	-------------

RNAV (GPS) RWY 25

ELKIN MUNI (ZEF')

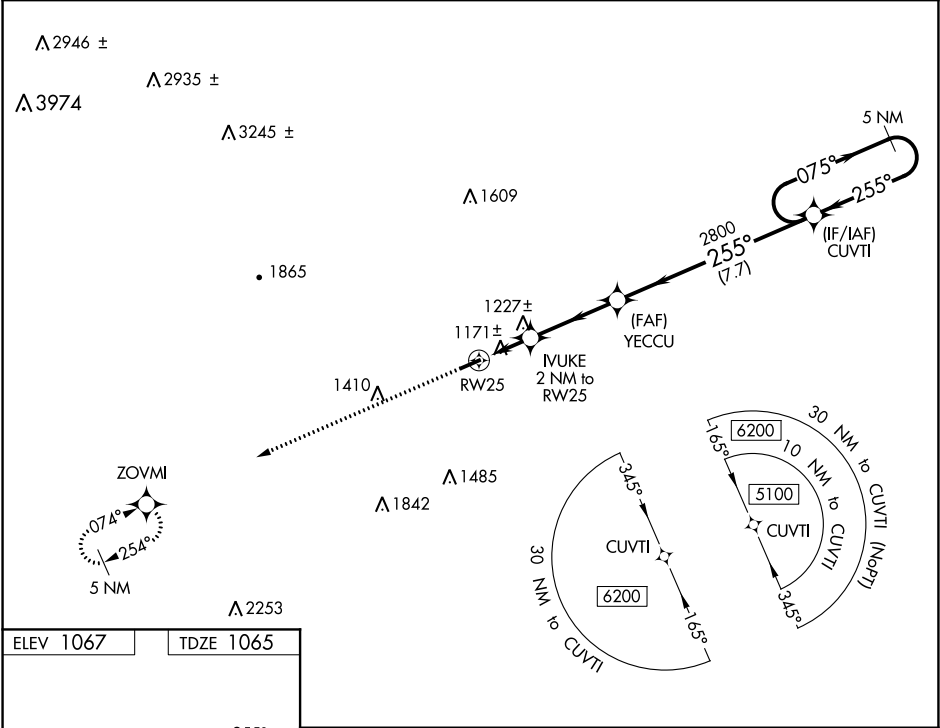
▼

Obtain local altimeter setting on CTAF; when not received, use Mount Airy altimeter setting and increase MDA 80 ft and LP and Circling Cats C/D visibility ¼ mile. DME/DME RNP-0.3 NA. Procedure NA at night. Helicopter visibility reduction below 1 SM NA.

MISSED APPROACH:

Climb to 4900 direct ZOVMI and hold, continue climb-in-hold to 4900.

ATLANTA CENTER 125.15 263.0	UNICOM 123.05(CTAF) 0
---------------------------------------	---------------------------------



ELEV 1067

TDZE 1065

Visual Segment - Obstacles.

4900

ZOVMI

Visual Segment - Obstacles.

255° to RW25

0.8% UP

4001 X 75

4900

Visual Segment - Obstacles.

YECCU

2800

CUVTI

5100

075°

255°

5 NM Holding Pattern

2 NM

3.4 NM

7.7 NM

CATEGORY	A	B	C	D
LP MDA	1 440-1	375 (400-1)	1 440-1½	375 (400-1½)
LNNAV MDA	1 480-1	415 (500-1)	1 480-1¾	415 (500-1¾)
CIRCLING	1 540-1 473 (500-1)	1 600-1 533 (600-1)	1 680-1¾ 613 (700-1¾)	1 840-2½ 773 (800-2½)

SE-2, 31 DEC 2020 to 28 JAN 2021

SE-2, 31 DEC 2020 to 28 JAN 2021