

WAAS CH 77837 W19A	APP CRS 188°	Rwy Idg 4501 TDZE 66 Apt Elev 67
--	------------------------	---

RNAV (GPS) RWY 19

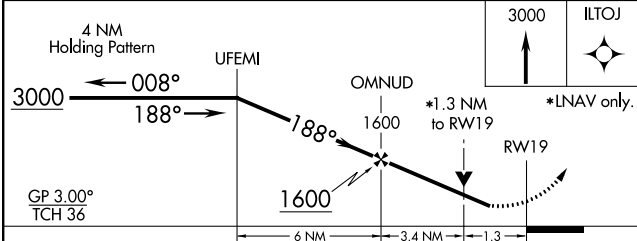
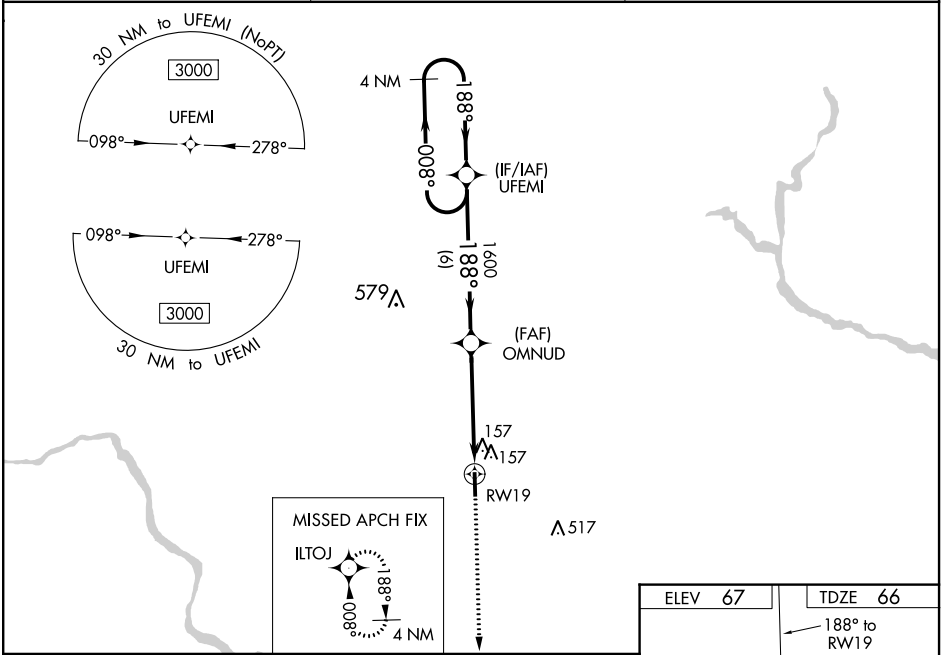
TRI-COUNTY AT HENRY JONER FIELD (ASJ)

⚠

DME/DME RNP-0.3 NA. Night Landing: Rwy 1 NA. VDP and Baro-VNAV NA when using Franklin altimeter setting. When local altimeter setting not received, use Franklin altimeter setting and increase all DA 67 feet and all MDA 80 feet; increase LPV and LNAV/VNAV all Cats visibility ¼ mile and LNAV Cat C/D visibility ⅛ mile. For uncompensated Baro-VNAV systems, LNAV/VNAV NA below -15°C (5°F) or above 54°C (130°F). Helicopter visibility reduction below ¾ SM NA.

MISSED APPROACH: Climb to 3000 direct ILTOJ and hold, continue climb-in-hold to 3000.

AWOS-3 119.075	WASHINGTON CENTER 123.85 279.65	UNICOM 122.8 (CTAF) 0
--------------------------	---	---------------------------------



ELEV 67

TDZE 66

188° to RWY19

61

4501 X 75

1

MIRL Rwy 1-19 0

REIL Rwy 1 and 19 0

CATEGORY	A	B	C	D
LPV DA	353-1 287 (300-1)			
LNAV/VNAV DA	430-1¼ 364 (400-1¼)			
LNAV MDA	520-1	454 (500-1)	520-1⅜	454 (500-1⅜)
CIRCLING	580-1	513 (600-1)	580-1½ 513 (600-1½)	820-2½ 753 (800-2½)