

WAAS CH 77733 W35A	APP CRS 348°	Rwy Idg TDZE Apt Elev	4990 159 162
--	------------------------	-----------------------------	---

RNAV (GPS) RWY 35

ALLENDALE COUNTY (A.Q.X)

RNP APCH.

▼

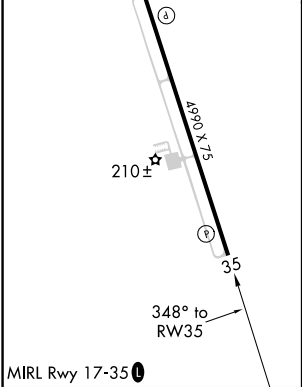
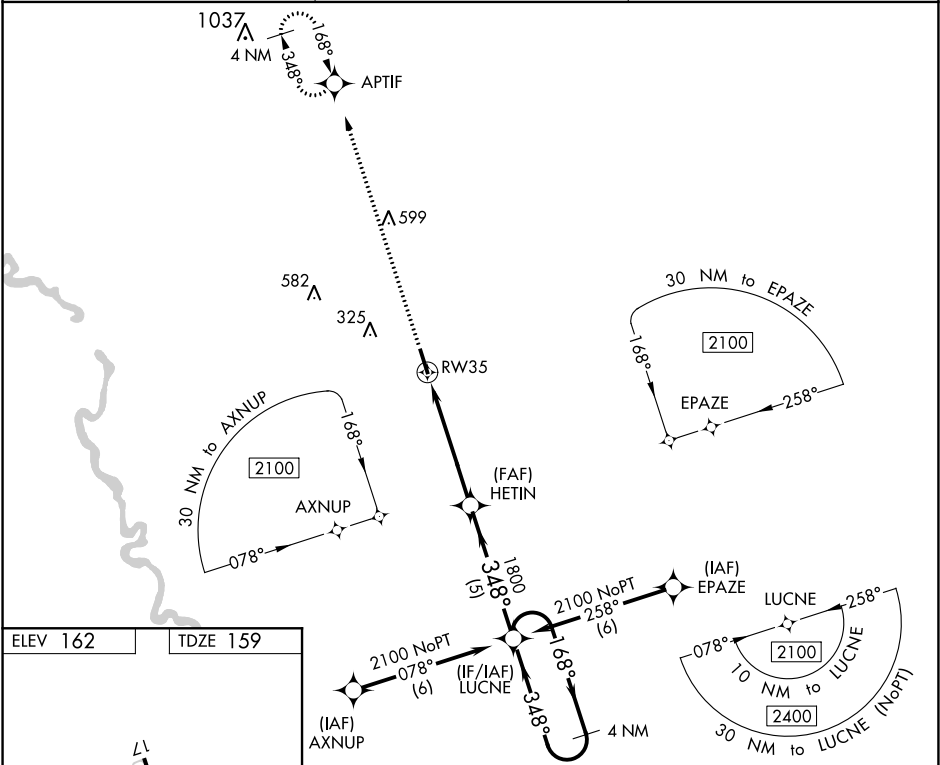
For uncompensated Baro-VNAV systems, LNAV/VNAV NA below -15°C or above 54°C.

▲

When local altimeter setting not received, use Augusta Rgnl at Bush Field altimeter setting and increase all DA 99 feet and all MDA 100 feet, increase LPV, LNAV/VNAV all Cats visibility ¾ mile. Baro-VNAV and VDP NA when using Augusta Rgnl at Bush Field altimeter setting.

MISSED APPROACH: Climb to 2100 direct APTIF and hold.

AWOS-3PT 118.95	JACKSONVILLE CENTER 132.925 363.2	UNICOM 122.8 (CTAF) 0
---------------------------	---	---------------------------------



2100	APTIF	VGSI and RNAV glidepath not coincident (VGSI Angle 3.00/TCH 26).		4 NM Holding Pattern
* LNAV only. * 1.3 NM to RW35		HETIN 1800	LUCNE	GP 3.00° TCH 47
RW35		1800	2100	
1.3		3.7 NM	5 NM	
CATEGORY	A	B	C	D
LPV DA	409-¾	250 (300-¾)		NA
LNAV/VNAV DA	591-1½	432 (500-1½)		NA
LNAV MDA	600-1	441 (500-1)		NA
CIRCLING	620-1 458 (500-1)	640-1 478 (500-1)		NA