

WAAS CH <b>90141</b> <b>W23A</b>	APP CRS <b>233°</b>	Rwy Idg <b>7001</b> TDZE <b>671</b> Apt Elev <b>683</b>
--	------------------------	---

RNAV (GPS) RWY 23

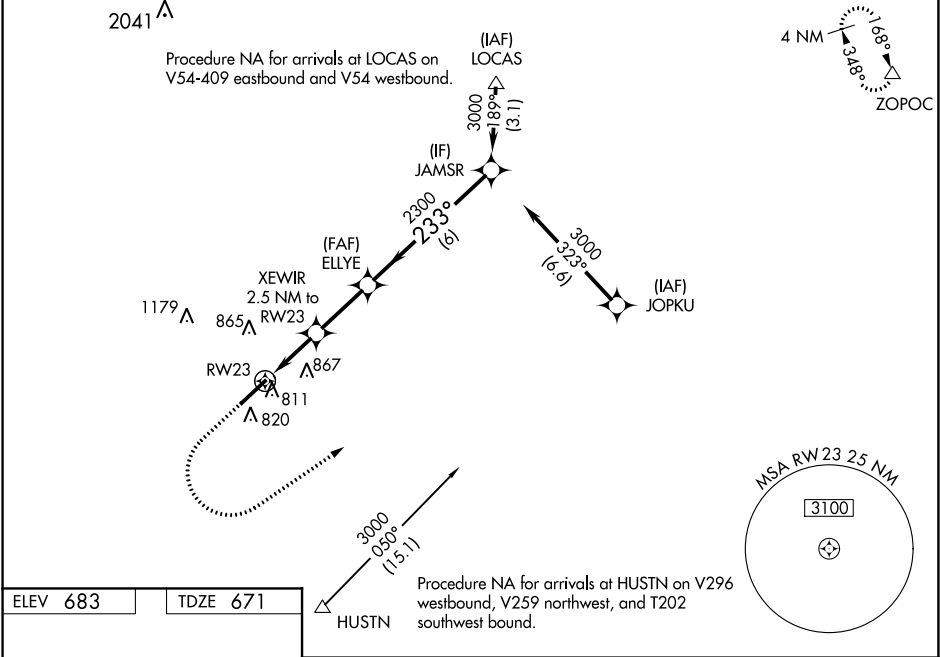
CHARLOTTE-MONROE EXECUTIVE (EQY)

⚠ For uncompensated Baro-VNAV systems, LNAV/VNAV NA below -10°C (14°F) or above 54°C (130°F).  
Baro-VNAV and VDP NA when using Charlotte altimeter setting. DME/DME RNP-0.3 NA.

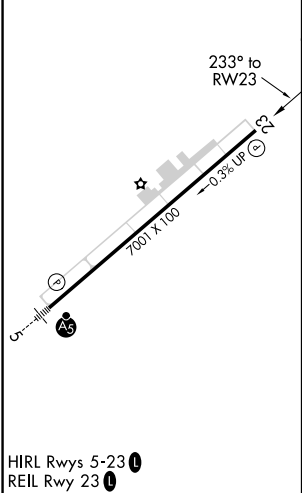
⚠ Rwy 23 helicopter visibility reduction below ¾ SM NA. When local altimeter setting not received, use Charlotte altimeter setting: increase LPV DA to 995 feet and visibility all Cats ¼ SM; increase LNAV/VNAV DA to 1037 feet and visibility all Cats ½ SM; increase all MDA 60 feet and LNAV Cats C/D and Circling Cat D visibility ¼ mile.

MISSED APPROACH:  
Climb to 1200 then  
climbing left turn to  
3000 direct to  
ZOPROC and hold.

ASOS <b>135.775</b>	CHARLOTTE APP CON <b>120.05 307.8</b>	CLNC DEL <b>132.55</b>	UNICOM <b>122.7 (CTAF) 0</b>
------------------------	--	---------------------------	---------------------------------



ELEV 683	TDZE 671
----------	----------



	1200	3000	ZOPROC	$\Delta$
*LNAV only				
	RW23	XEWIR 2.5 NM to RW23	ELLYE 2300	JAMSR 3000
	1.2 NM	1.3 NM	2.5 NM	6 NM
		*1480	2300	233°
				GP 3.00° TCH 40
CATEGORY	A	B	C	D
LPV DA	939-7/8 268 (300-7/8)			
LNAV/VNAV DA	981-1 1/8 310 (300-1 1/8)			
LNAV MDA	1080-1	409 (400-1)	1080-1 1/8	409 (400-1 1/8)
CIRCLING	1220-1	537 (600-1)	1220-1 1/2 537 (600-1 1/2)	1480-2 1/2 797 (800-2 1/2)