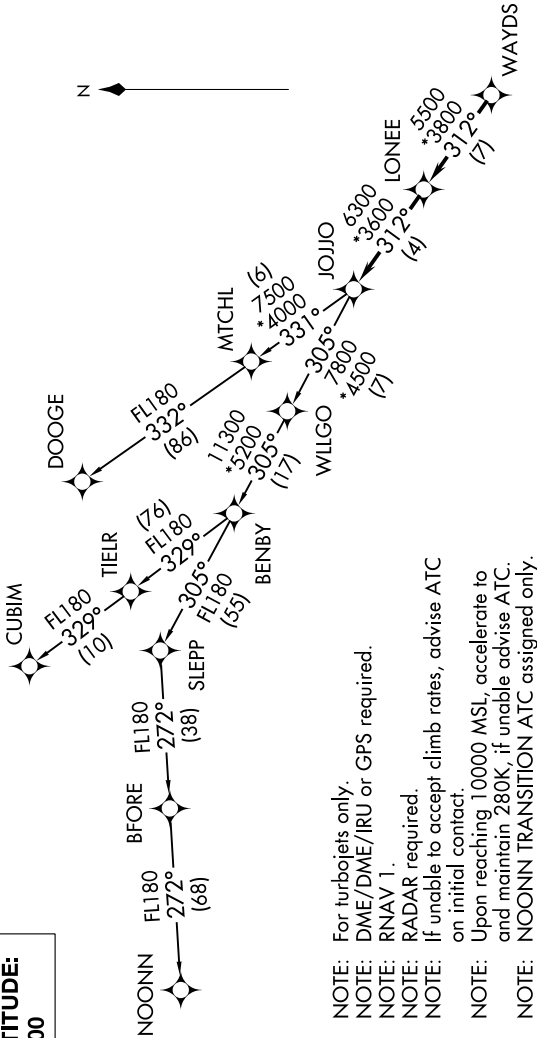


SE-2, 31 DEC 2020 to 28 JAN 2021

ASOS
135.775
CLNC DEL
132.55
UNICOM (CTAF)
122.7
CHARLOTTE DEP CON
120.05 307.8



TOP ALTITUDE:
3000

- NOTE: For turbojets only.
- NOTE: DME/DME/IRU or GPS required.
- NOTE: RNAV 1.
- NOTE: RADAR required.
- NOTE: Upon reaching 10000 MSL, accelerate to and maintain 280K, if unable advise ATC.
- NOTE: NOONN TRANSITION ATC assigned only.

DEPARTURE ROUTE DESCRIPTION

Climb on heading assigned by ATC, expect RADAR vectors to WAYDS, then on depicted route to JOJJO. Then on assigned transition. Maintain 3000, expect clearance to filed altitude within 10 minutes after departure.

- CUBIM TRANSITION (JOJJO4.CUBIM)
- DOOGE TRANSITION (JOJJO4.DOOGE)
- NOONN TRANSITION (JOJJO4.NOONN)

TAKEOFF MINIMUMS
Rwys 5, 23: Standard.

NOTE: Chart not to scale.