

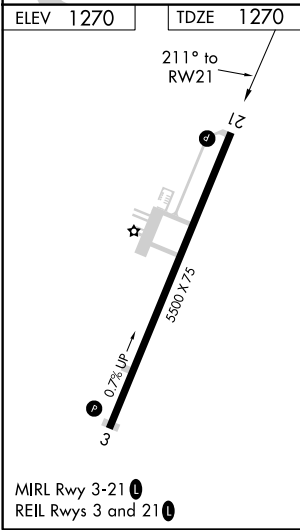
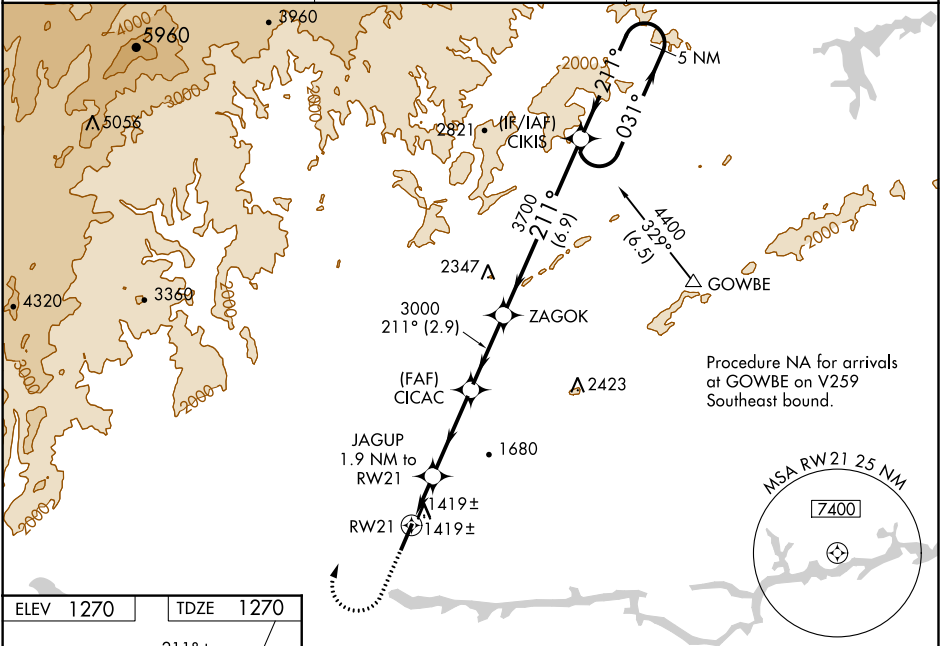
WAAS CH 40322 W21A	APP CRS 211°	Rwy Idg TDZE Apt Elev	5500 1270 1270
----------------------------------------	------------------------	-----------------------------	-------------------------------------------

RNAV (GPS) RWY 21
FOOTHILLS RGNL (MRN)

Baro-VNAV NA when using Hickory altimeter setting. For uncompensated Baro-VNAV systems, LNAV/VNAV NA below -17°C (2°F) or above 35°C (95°F).
DME/DME RNP-0.3 NA. VDP NA with Hickory altimeter setting. When local altimeter setting not received use Hickory altimeter setting and increase all DA 39 feet and all MDA 40 feet; increase LPV all Cats visibility ¼ mile, increase LNAV/VNAV all Cats visibility ⅓ mile and increase LNAV Cats C and D visibility ¼ mile.

MISSED APPROACH: Climb to 2000 then climbing right turn to 4400 direct CIKIS and hold.

AWOS-3P 124.175	ATLANTA CENTER 125.15 263.0	UNICOM 122.7 (CTAF) 0
---------------------------	---------------------------------------	---------------------------------



2000	4400	CIKIS	VGSI and RNAV glidepath not coincident (VGSI Angle 3.50/TCH 48).		5 NM Holding Pattern
*LNAV only		JAGUP 1.9 NM to RW21	CIKIS 3000	ZAGOK 3000	GP 3.00° TCH 45
*1 NM to RW21		*1920	3000	3700	
1 NM		0.9 NM	3.4 NM	2.9 NM	6.9 NM
CATEGORY	A	B	C	D	
LPV DA	1520-¾		250 (300-¾)		
LNAV/VNAV DA	1600-1½		330 (400-1½)		
LNAV MDA	1680-1 410 (500-1)		1680-1½ 410 (500-1½)		
CIRCLING	1720-1 450 (500-1)	1760-1 490 (500-1)	1760-1½ 490 (500-1½)	1840-2 570 (600-2)	

SE-2, 31 DEC 2020 to 28 JAN 2021

SE-2, 31 DEC 2020 to 28 JAN 2021