

WAAS CH 99424 W23A	APP CRS 230°	Rwy Idg 5001 TDZE 847 Apt Elev 847
--	------------------------	---

RNAV (GPS) RWY 23

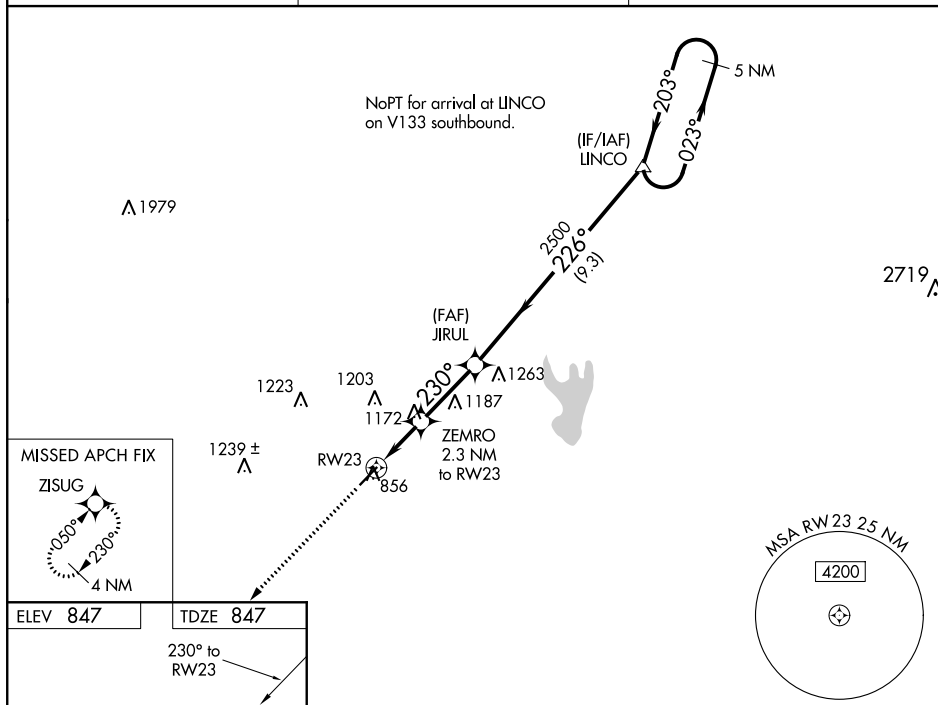
SHELBY-CLEVELAND COUNTY RGNL (EHO)

RNP APCH.

⚠ Baro-VNAV NA when using Charlotte altimeter setting. For uncompensated Baro-VNAV systems, LNAV/VNAV NA below -16°C or above 38°C. When local altimeter setting not received, use Charlotte altimeter setting and increase all DA 88 feet and all MDA 100 feet; increase LPV all Cats visibility $\frac{1}{8}$ SM and LNAV/VNAV all Cats, LNAV Cat C/D visibility $\frac{1}{4}$ SM.

MISSED APPROACH:
Climb to 3000 direct
ZISUG and hold.

AWOS-3 118.425	CHARLOTTE APP CON 120.05 257.2	UNICOM 122.8 (CTAF) 0
--------------------------	--	---------------------------------



5001 x 100

5 NM Holding Pattern

VGS and RNAV glidepath not coincident (VGS Angle 3.00/TCH 28).

CATEGORY	A	B	C	D
LPV DA	1097-1	250 (300-1)		
LNAV/VNAV DA	1123-1	276 (300-1)		
LNAV MDA	1440-1	593 (600-1)	1440-1 ³ / ₄	593 (600-1 ³ / ₄)