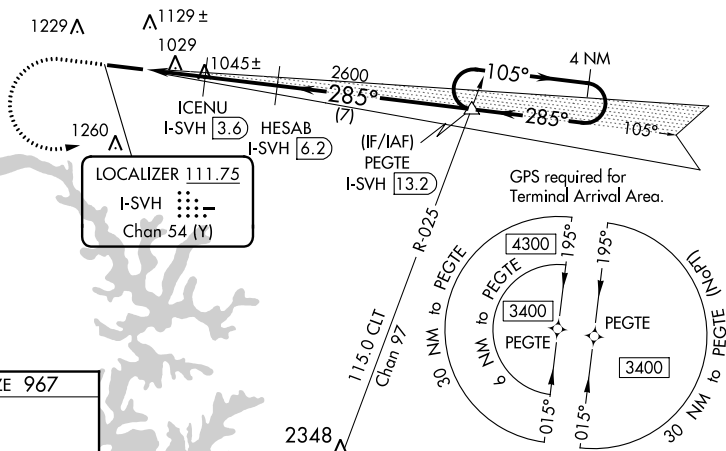


ILS Y or LOC Y RWY 28
STATESVILLE RGNL (SVH)

MISSED APPROACH: Climb to 1700 then climbing left turn to 3400 on heading 105° and on CLT VOR/DME R-025 to PEGTE INT/I-SVH 13.2 DME and hold.

123.075 (CTAF) L

A 2323



GPS required for
Terminal Arrival Area.

[illegible]

CATEGORY				
	A	B	C	D
S-ILS 28	1167- $\frac{1}{2}$ 200 (200- $\frac{1}{2}$)			
S-LOC 28	1280- $\frac{1}{2}$ 313 (400- $\frac{1}{2}$)			
CIRCLING	1420-1 452 (500-1)	1540-1 572 (600-1)	1540-1 $\frac{1}{2}$ 572 (600-1 $\frac{1}{2}$)	1560-2 592 (600-2)