

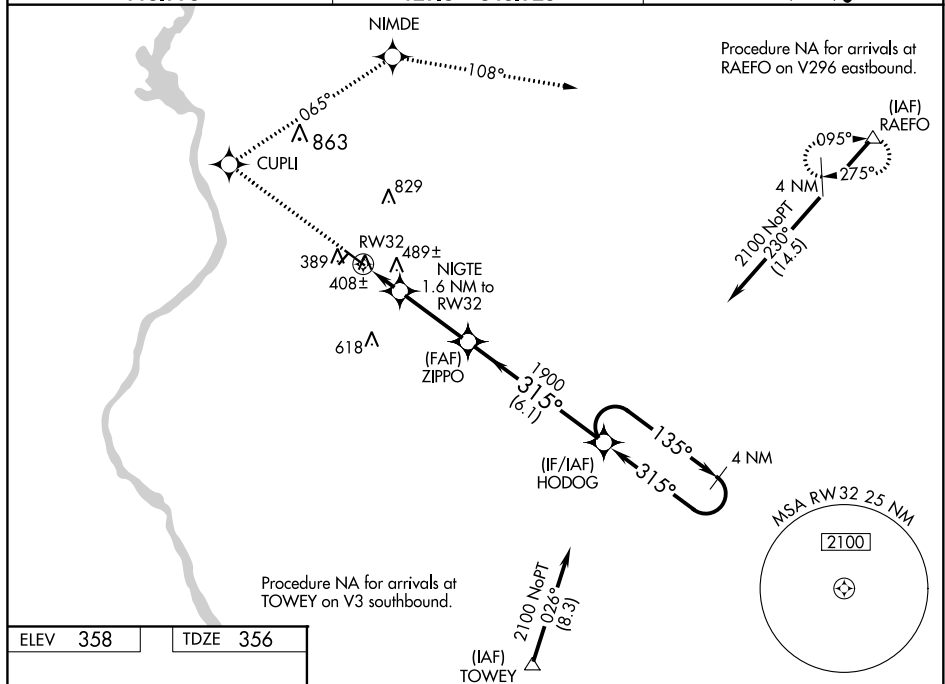
WAAS CH <b>63217</b> <b>W32A</b>	APP CRS <b>315°</b>	Rwy Idg <b>4800</b> TDZE <b>356</b> Apt Elev <b>358</b>
--	------------------------	---

RNAV (GPS) RWY 32  
RICHMOND COUNTY (RCZ)

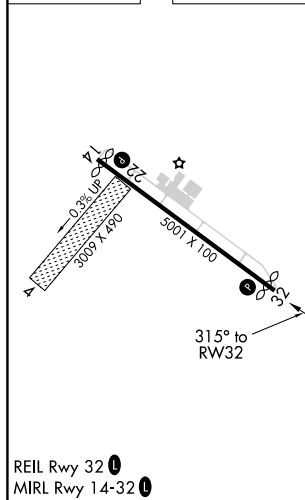
**⚠** Baro-VNAV and VDP NA when using MacKall AAF altimeter setting. For uncompensated Baro-VNAV systems, LNAV/VNAV NA below -15°C (5°F) or above 48°C (118°F). DME/DME RNP-0.3 NA. Rwy 32 helicopter visibility reduction below ¾ SM NA. When local altimeter setting not received, use MacKall AAF altimeter setting and increase all DA 39 feet and all MDA 40 feet and increase LNAV Cat C visibility ¾ SM. Circling Rwy 14 NA at night. Circling NA to Rwy 4 and 22.

**MISSED APPROACH:** Climb to 2400 direct CUPLI and right turn on track 065° to NIMDE and on track 108° to RAEFO and hold.

AWOS-3 118.775	FAYETTEVILLE APP CON 127.8 343.725	UNICOM 122.8 (CTAF) 0
-------------------	---------------------------------------	--------------------------



ELEV	358		TDZE	356
------	-----	--	------	-----



2400 ↑	CUPLI ✦	NIGTE ✦ tr 065°	NIMDE ✦ tr 108°	RAEFO △	VGS1 and RNAV glidepath not coincident (VGS1 Angle 3.15/TCH 25).			
*RNAV only.					HODOG	4 NM Holding Pattern		
					1900 2100 GP 3.00° TCH 40			
1.1 NM    0.5 NM    3 NM    6.1 NM								
CATEGORY		A		B		C		D
LPV	DA	633-1 277 (300-1)						
RNAV/ VNAV	DA	794-1½ 438 (500-1½)						
RNAV MDA		740-1 384 (400-1)			740-1⅛ 384 (400-1⅛)		740-1¼ 384 (400-1¼)	
CIRCLING		800-1 442 (500-1)		820-1 462 (500-1)		820-1½ 462 (500-1½)		920-2 562 (600-2)