

WAAS CH 40321 W02A	APP CRS 022°	Rwy Idg TDZE 772 Apt Elev 772	5375
--	------------------------	---	-------------

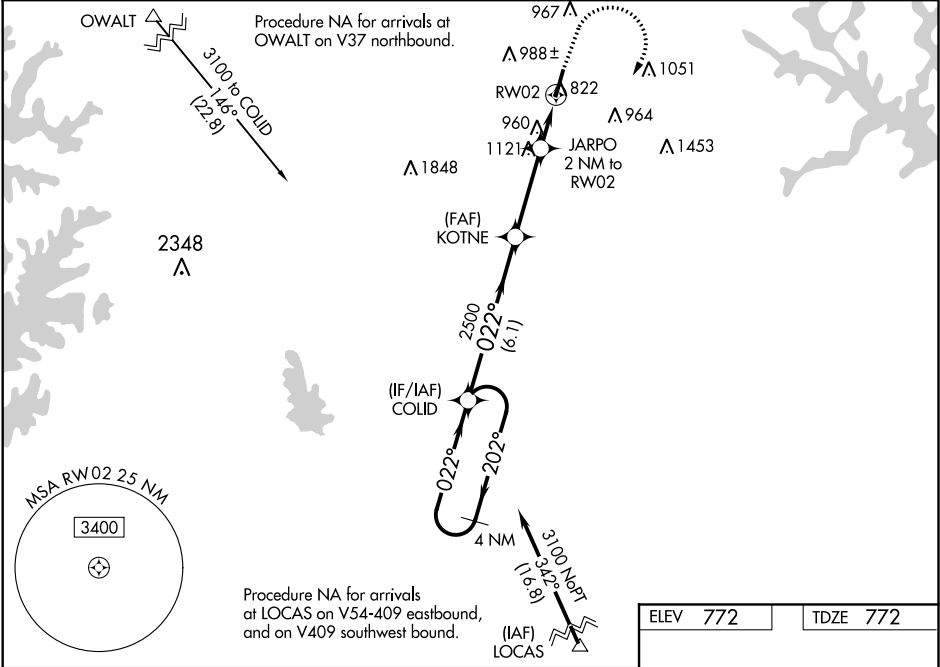
RNAV (GPS) RWY 2
MID-CAROLINA RGNL (RUQ)

RNP APCH.

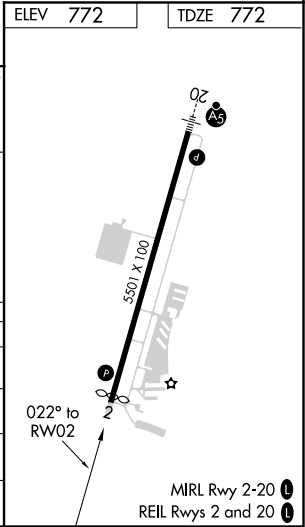
For uncompensated Baro-VNAV systems, LNAV/VNAV NA below -16°C or above 54°C.
Rwy 2 helicopter visibility reduction below 3/4 SM NA.

MISSED APPROACH:
Climb to 1500 then
climbing right turn to
3100 direct COLID
and hold.

AWOS-3 118.175	CHARLOTTE APP CON 128.325 307.8	CLNC DEL 127.35	UNICOM 122.725 (CTAF) 0
--------------------------	---	---------------------------	-----------------------------------



VGSi and RNAV glidepath not coincident (VGSi Angle 3.00/TCH 34).				
4 NM Holding Pattern				
3100 ← 202° 022° → 2500				
GP 3.00° TCH 55				
KOTNE 2500 JARPO 2 NM to RW02				
*1.3 NM to RW02				
*1460				
6.1 NM 3.3 NM 0.7 NM 1.3 NM				
CATEGORY	A	B	C	D
LPV DA	1138-1 366 (400-1)			
LNAV/VNAV DA	1181-1 1/8 409 (500-1 1/8)			
LNAV MDA	1220-1	448 (500-1)	1220-1 3/8	448 (500-1 3/8)
CIRCLING	1220-1 448 (500-1)	1260-1 488 (500-1)	1440-1 3/4 668 (700-1 3/4)	1440-2 668 (700-2)



SE-2, 31 DEC 2020 to 28 JAN 2021

SE-2, 31 DEC 2020 to 28 JAN 2021