

KNIGHTS TWO DEPARTURE

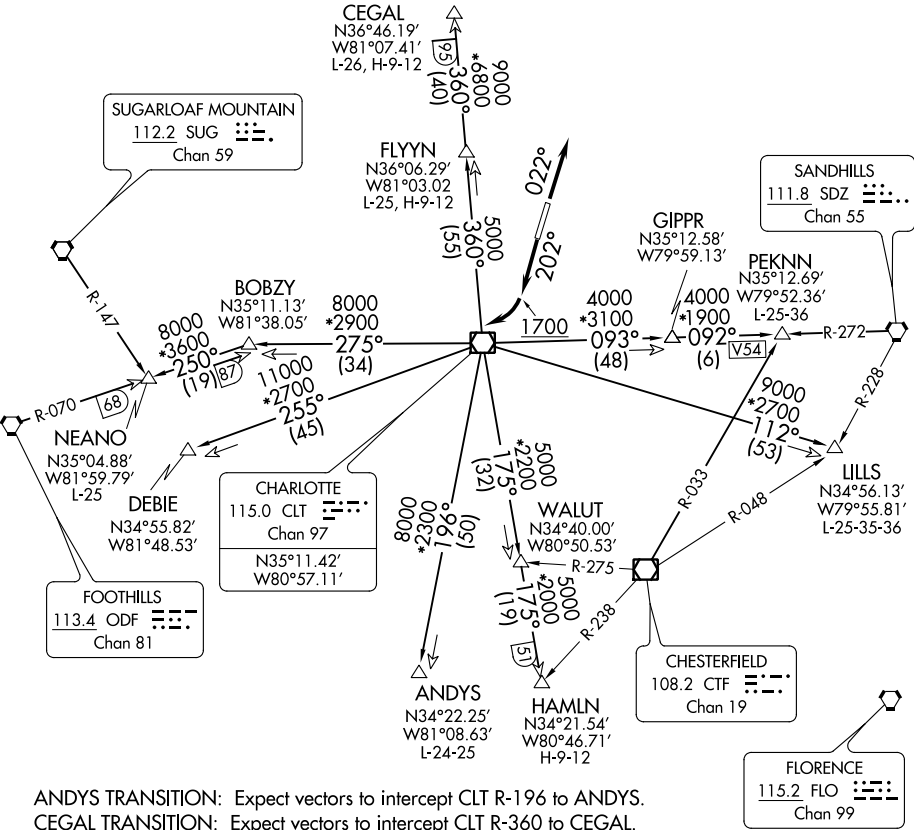
AWOS-3
118.175
CLNC DEL
127.35
UNICOM
122.725
CHARLOTTE DEP CON
128.325 308.8

TOP ALTITUDE:
3000

NOTE: For propeller aircraft only.
NOTE: RADAR and DME required.
NOTE: Turboprops: Operate in a manner that will
result in best forward speed and climb rate.
NOTE: Transponder code will be issued via
Charlotte clearance delivery.

TAKEOFF MINIMUMS

Rwy 2: Standard.
Rwy 20: 400-2¾ or standard with minimum climb of 205' per NM to 1300, or alternatively,
with standard takeoff minimums and a normal 200' per NM climb gradient, takeoff
must occur no later than 1200' prior to DER.



ANDYS TRANSITION: Expect vectors to intercept CLT R-196 to ANDYS.
CEGAL TRANSITION: Expect vectors to intercept CLT R-360 to CEGAL.
DEBIE TRANSITION: Expect vectors to intercept CLT R-255 to DEBIE.
FLYYN TRANSITION: Expect vectors to intercept CLT R-360 to FLYYN.
HAMLN TRANSITION: Expect vectors to intercept CLT R-175 to HAMLN.
LILLS TRANSITION: Expect vectors to intercept CLT R-112 to LILLS.
NEANO TRANSITION: Expect vectors to intercept CLT R-275 to BOBZY then ODF R-070 to NEANO.
PEKNN TRANSITION: Expect vectors to intercept CLT R-093 to GIPPR then SDZ R-272 to PEKNN.

(NARRATIVE ON FOLLOWING PAGE)

NOTE: Chart not to scale.

KNIGHTS TWO DEPARTURE