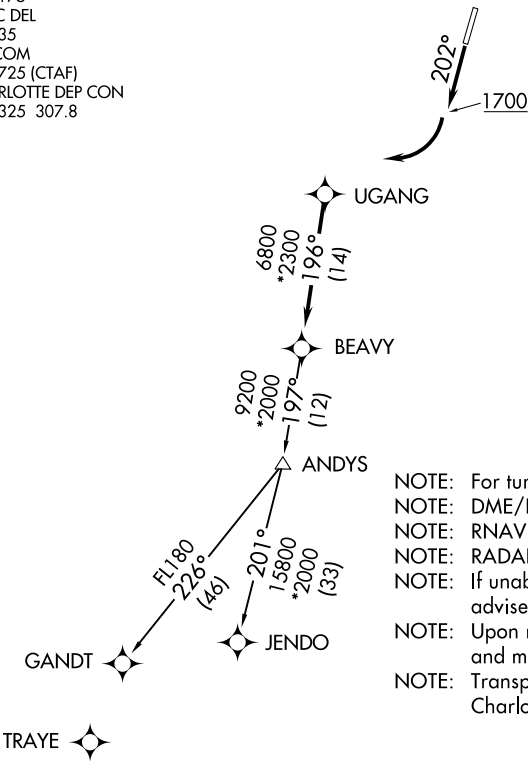


AWOS-3
118.175
CLNC DEL
127.35
UNICOM
122.725 (CTAF)
CHARLOTTE DEP CON
128.325 307.8

TOP ALTITUDE:
3000



- NOTE: For turbojets only.
NOTE: DME/DME/IRU or GPS required.
NOTE: RNAV 1.
NOTE: RADAR required.
NOTE: If unable to accept climb rates, advise ATC on initial contact.
NOTE: Upon reaching 10000 MSL, accelerate to and maintain 280K, if unable advise ATC.
NOTE: Transponder code will be issued via PDC or Charlotte CLNC DEL.

TAKEOFF MINIMUMS

Rwy 2: Standard.
Rwy 20: 400-2¾ or standard with minimum climb of 205' per NM to 1300, or alternatively, with standard takeoff minimums and a normal 200' per NM climb gradient, takeoff must occur no later than 1200' prior to DER.

NOTE: Chart not to scale.

DEPARTURE ROUTE DESCRIPTION

TAKEOFF RWY 2: Climb heading 202° to 1700 before turning right.

Climb on heading assigned by ATC, expect RADAR vectors to UGANG, then on track 196° to BEAVY. Then on assigned transition. Maintain 3000, expect clearance to filed altitude within 10 minutes after departure.

GANDT TRANSITION (BEAVY5.GANDT)
JENDO TRANSITION (BEAVY5.JENDO)