

APP CRS
076°

Rwy Idg
4997

TDZE
24

Apt Elev
26

RNAV (GPS) RWY 8

PITT-GREENVILLE (PGV)

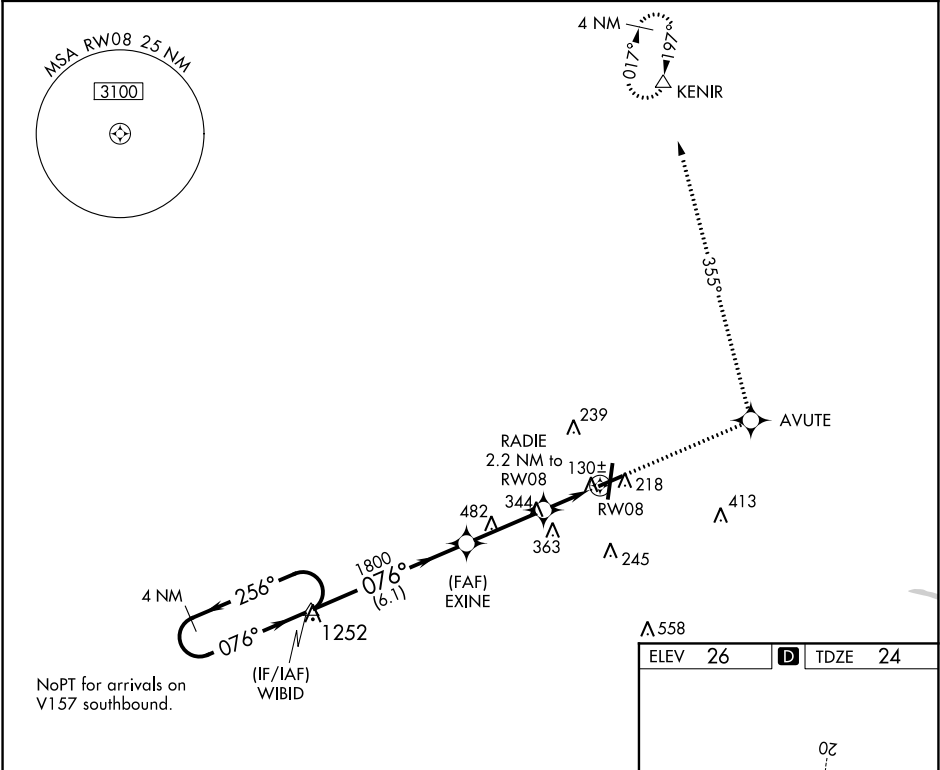
▼

▲

DME/DME RNP-0.3 NA. Visibility reduction by helicopters NA. When local altimeter setting not received use Washington altimeter setting and increase all MDA 60 feet and increase LNAV Cats C and D and Circling Cat C visibilities ¼ mile.

MISSED APPROACH: Climb to 3000 direct AVUTE and via 355° track to KENIR and hold.

AWOS-3 128.425	WASHINGTON CENTER 123.85 279.65	CLNC DEL 122.35	UNICOM 122.8 (CTAF) 0
-------------------	------------------------------------	--------------------	--------------------------



VGSIs and descent angles not coincident (VGSIs Angle 4.00/TCH 53).

4 NM Holding Pattern

WIBID

EXINE

3000

AVUTE

tr 355°

KENIR

2700

256°

076°

076°

1800

3.14°

TCH 42

RADIE

2.2 NM to RWY 08

RWY 08

6.1 NM

3 NM

2.2 NM

CATEGORY	A	B	C	D
LNAV MDA	500-1 476 (500-1)	500-1¼ 476 (500-1¼)	500-1½ 476 (500-1½)	500-1½ 476 (500-1½)
CIRCLING	620-1 594 (600-1)	620-1½ 594 (600-1½)	620-2 594 (600-2)	620-2 594 (600-2)

HIRL Rwy 2-20 0

MIRL Rwy 8-26 0

REIL Rwy 2, 8, and 26 0