

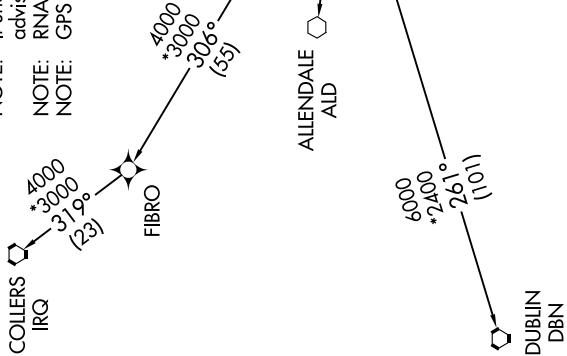
ATIS 124.75
CLNC DEL 119.85
GND CON 121.9 348.6
CTAF 122.8
CHARLESTON DEP CON 120.7 306.925

EXECUTIVE ONE DEPARTURE (RNAV)
(EXTVE1.PLFMD) 25AUG11

TAKEOFF MINIMUMS:

Rwy 4: ATC climb of 500' per NM to 900.
Rwy 9: ATC climb of 500' per NM to 800.
Rwy 22: Standard with minimum climb of 245' per NM to 520. ATC climb of 500' per NM to 1300.
Rwy 27: ATC climb of 500' per NM to 1500.

NOTE: Transponder code will be issued by Charleston clearance delivery.
NOTE: If unable to accept climb rate, advise ATC on initial contact.
NOTE: RNAV 1.
NOTE: GPS required.



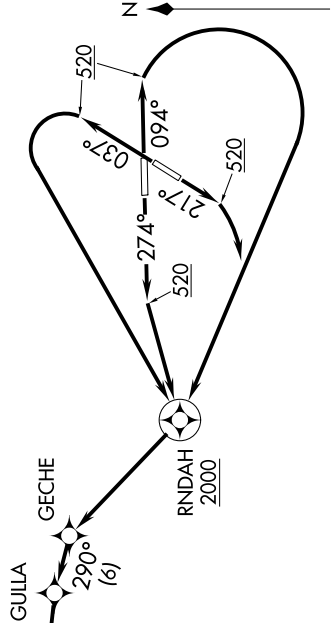
NOTE: Chart not to scale.

DEPARTURE ROUTE DESCRIPTION

TAKEOFF RWY 4: Climb heading 037° to 520 MSL, then left turn direct RNDDAH, cross RNDDAH at or above 2000, direct GECHE and then on depicted route to PLFMD, thence. . . .
TAKEOFF RWY 9: Climb heading 094° to 520 MSL, then right turn direct RNDDAH, cross RNDDAH at or above 2000, direct GECHE and then on depicted route to PLFMD, thence. . . .
TAKEOFF RWY 22: Climb heading 217° to 520 MSL, then right turn direct RNDDAH, cross RNDDAH at or above 2000, direct GECHE and then on depicted route to PLFMD, thence. . . .
TAKEOFF RWY 27: Climb heading 274° to 520 MSL, then direct RNDDAH, cross RNDDAH at or above 2000, direct GECHE and then on depicted route to PLFMD, thence. . . .

. . . via assigned transition, maintain 2000. Expect clearance to filed altitude/flight level within ten (10) minutes after departure.

ALLENDALE TRANSITION (EXTVE1.ALD)
COLLIERS TRANSITION (EXTVE1.IRQ)
DUBLIN TRANSITION (EXTVE1.DBN)



CHARLESTON EXECUTIVE (JZI)
CHARLESTON, SOUTH CAROLINA

CHARLESTON, SOUTH CAROLINA
CHARLESTON EXECUTIVE (JZI)