

WAAS CH <b>70526</b> <b>W05A</b>	APP CRS <b>054°</b>	Rwy Idg <b>5502</b> TDZE <b>455</b> Apt Elev <b>459</b>
--	------------------------	---

Rwy Idg	<b>5502</b>
TDZE	<b>455</b>
Apt Elev	<b>459</b>

Rwy Idg	<b>5502</b>
TDZE	<b>455</b>
Apt Elev	<b>459</b>

# RNAV (GPS) RWY 5

## MOORE COUNTY (SOP)

**▼** For uncompensated Baro-VNAV systems, LNAV/VNAV NA below -1.5°C (5°F) or above 54°C (130°F). DME/DME RNP-0.3 NA. For inop MALSR, increase LNAV/VNAV all Cats visibility to ¾ mile, LNAV Cats A/B visibility to 1 mile and LNAV Cats C/D visibility to 1½ mile. When local altimeter setting not received, use Sanford altimeter setting and increase all DA 88 feet and all MDA 100 feet, increase LNAV/VNAV all Cats visibility ¾ mile, LNAV Cats C/D visibility ¼ mile, and Circling Cat C ½ mile. When using Sanford altimeter setting, for inop MALSR increase LNAV/VNAV all Cats visibility to 1½ mile, LNAV Cats A/B visibility to 1 mile, and LNAV Cat C/D visibility to 1¾ mile. Baro-VNAV and VDP NA when using Sanford altimeter setting.

MALSR



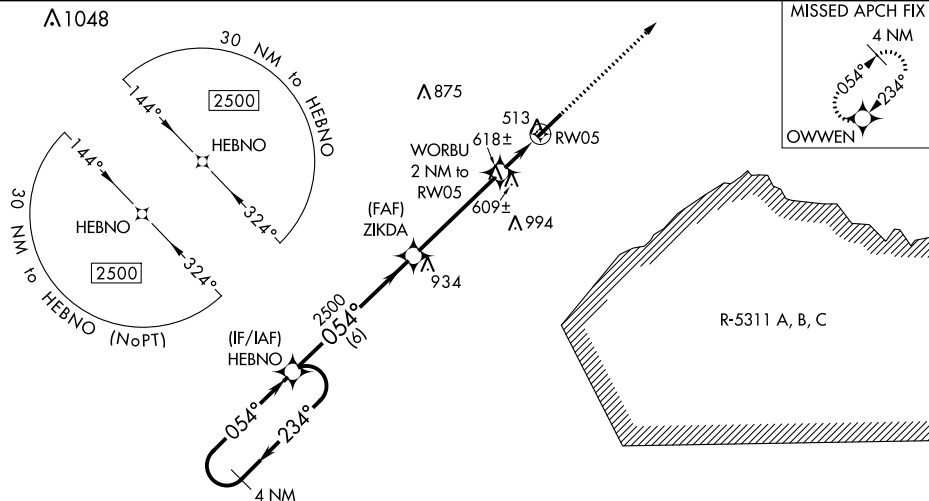
**MISSED APPROACH:**  
Climb to 2500 direct  
OWWEN and hold.

AWOS-3PT  
**127,575**

FAYETTEVILLE APP CON  
127.8 343.725

CLNC DEL  
**127.0**


UNICOM  
123.05 (CTAF) **L**



4 NM  
Holding Pattern

Diagram illustrating the ZIKDA 2500 station layout and associated navigation data:

- Station:** ZIKDA 2500
- Directional Data:**
  - ← 234° / 054° → (between HEBNO and ZIKDA 2500)
  - \*1.1 NM to RW05 (between ZIKDA 2500 and WORBU 2 NM to RW05)
  - \*1120 (between ZIKDA 2500 and RW05)
- Other Labels:** HEBNO, WORBU 2 NM to RW05, RW05, GP 3.00°, TCH 39, \*LNAV only

CATEGORY		A	B	C	D
LPV	DA	655-1/2 200 (200-1/2)			
RNAV/ VNAV	DA	750-1/2 295 (300-1/2)			
RNAV	MDA	860-1/2 405 (500-1/2)		860-3/4 405 (500-3/4)	
 CIRCLING		880-1 421 (500-1)	920-1 461 (500-1)	1100-1 3/4 641 (700-1 3/4)	1360-3 901 (1000-3)

ELEV 459

D TDZE 455

514 ☆

6503 X 150

0.4° UP

0.54° to RW05

A5

REIL Rwy 23

HIRL Rwy 5-23