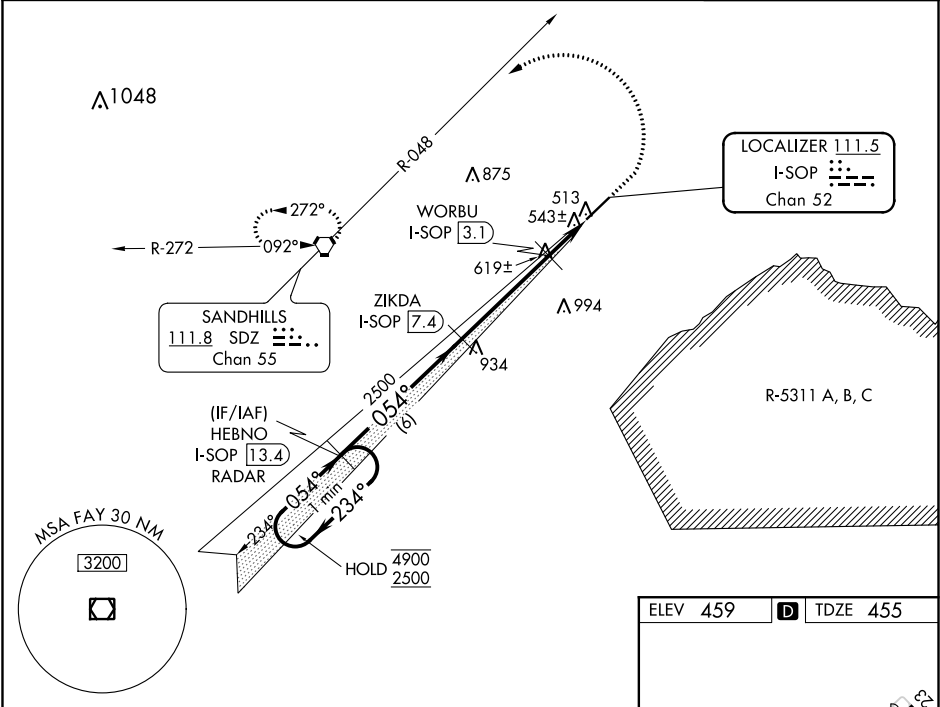


LOC/DME I-SOP	APP CRS	Rwy Idg	5502
111.5	054°	TDZE	455
Chan 52		Apt Elev	459

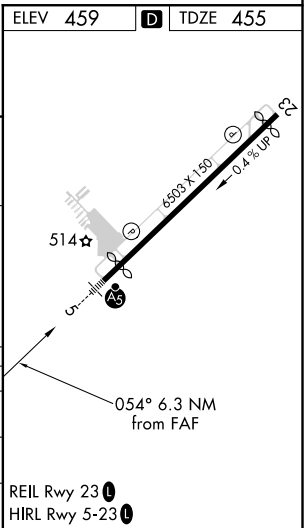
ILS Z or LOC Z RWY 5
MOORE COUNTY(SOP)

DME required. RADAR required for procedure entry.	MALSR 	MISSED APPROACH: Climb to 1400 then climbing left turn to 3300 on heading 300° and on SDZ VORTAC R-048 to SDZ VORTAC and hold.

AWOS-3PT 127.575	FAYETTEVILLE APP CON 127.8 343.725	CLNC DEL 127.0	UNICOM 123.05(CTAF)
---------------------	---------------------------------------	-------------------	------------------------



One Minute Holding Pattern				
CATEGORY	A	B	C	D
S-ILS 5	655-1/2 200 (200-1/2)			
S-LOC 5	800-1/2	345 (400-1/2)	800-5/8	345 (400-5/8)
CIRCLING	880-1 421 (500-1)	920-1 461 (500-1)	1100-1 1/4 641 (700-1 1/4)	1360-3 901 (1000-3)



SE-2, 31 DEC 2020 to 28 JAN 2021

SE-2, 31 DEC 2020 to 28 JAN 2021