

NDB SMS	APP CRS	Rwy Idg	5501
252	217°	TDZE	182
		Apt Elev	182

NDB RWY 23

SUMTER (SMS)

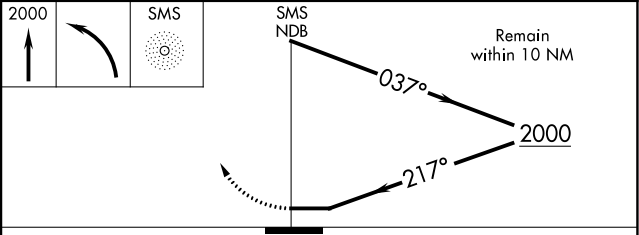
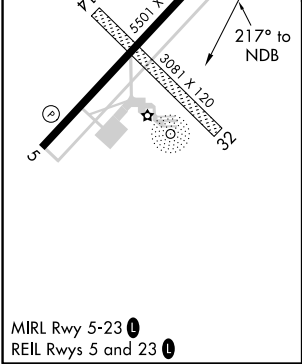
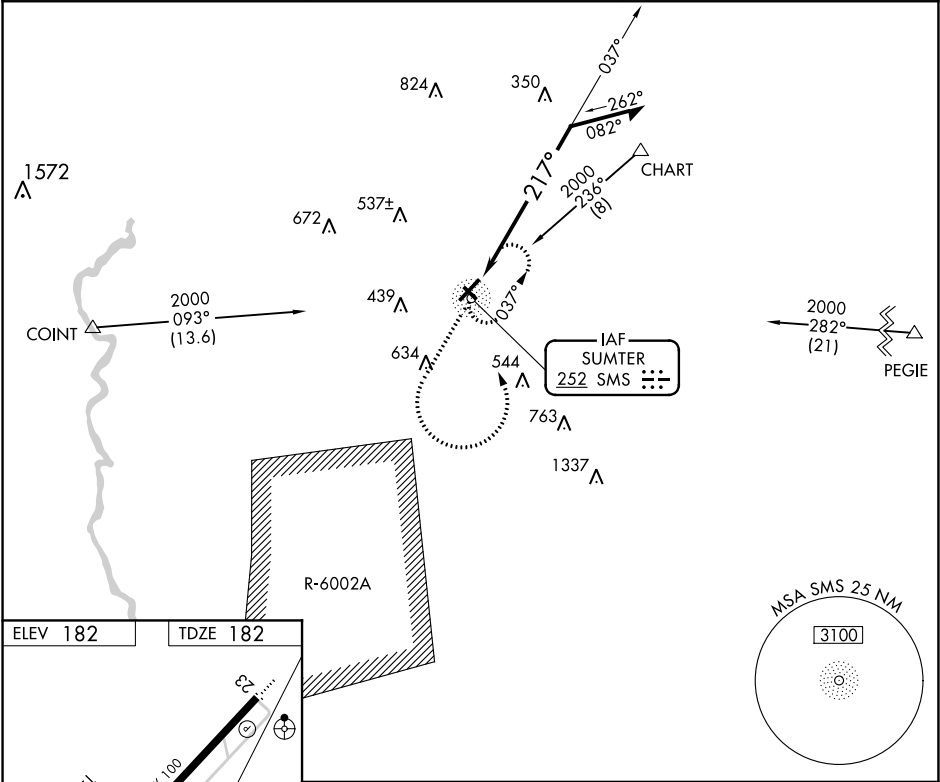
⚠

Inoperative table does not apply to S-23 Cat C. Procedure NA when R-6002A is active. Circling NA to Rwy 14-32. When local altimeter setting not received, use Camden altimeter setting and increase all MDA 80 feet, increase S-23 Cat C visibility ½ SM, Circling Cat C/D visibility ½ SM.

ODALS

MISSED APPROACH: Climb to 2000 then climbing left turn direct SMS NDB and hold.

AWOS-3 118.075	SHAW APP CON ★ 125.4	UNICOM 122.7 (CTAF) 0
-------------------	-------------------------	--------------------------



CATEGORY	A	B	C	D
S-23	700-¾ 518 (600-¾)		700-1½ 518 (600-1½)	700-1¾ 518 (600-1¾)
CIRCLING	700-1 518 (600-1)		1000-2½ 818 (900-2½)	1000-2¾ 818 (900-2¾)