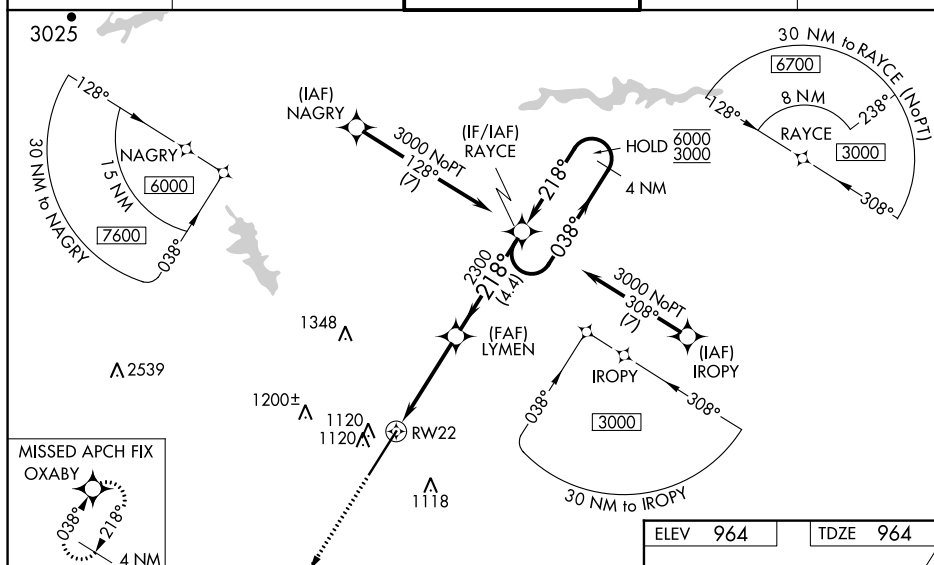


RNAV (GPS) RWY 22  
GREENVILLE SPARTANBURG INTL (GSP)

For uncompensated Baro-VNAV systems, LNAV/VNAV NA below -10°C or above 54°C. For inop ALS, increase LNAV/VNAV all Cats visibility to RVR 4500. When local altimeter setting not received, use Greenville downtown altimeter setting: increase LPV DA to 1193 feet; increase LNAV/VNAV DA to 1267 feet; increase all MDA 40 feet and LNAV Cat C/D visibility to RVR 4000; increase Circling Cat D visibility to 2½ SM. For inop ALS, when using Greenville downtown altimeter setting, increase LNAV/VNAV all Cats visibility to RVR 4500. VDP and Baro-VNAV NA when using Greenville downtown altimeter setting.





**MISSED APPROACH:**  
Climb to 3000 direct  
OXABY and hold.

UNICOM  
122.95

MISSED APCH FIX  
OXABY



038°  
218°  
4 NM

|   |   |
|---|---|
| 3000  | OXABY   |
|  |  |

\* LNAV only.

VGSI and RNAV glidepath not coincident (VGSI Angle 3.00/TCH 76).

RAYCE 4 NM  
Holding Pattern

LYMEN

\*1 NM to

RW22  
RW22 |


2300

 $218^{\circ}$ 

7

3000

GP 3.00°  
TCH 61

| CATEGORY   |     | A                   | B           | C                       | D                       |
|--|-----|---------------------|-------------|-------------------------|-------------------------|
| LPV  | DA  | 1164/24 200 (200-½) |             |                         |                         |
| LNAV/<br>VNAV  | DA  | 1238/24 274 (300-½) |             |                         |                         |
| LNAV   | MDA | 1360/24             | 396 (400-½) | 1360/35                 | 396 (400-¾)             |
|  CIRCLING |     | 1440-1              | 476 (500-1) | 1480-1½<br>516 (600-1½) | 1700-2¼<br>736 (800-2¼) |

