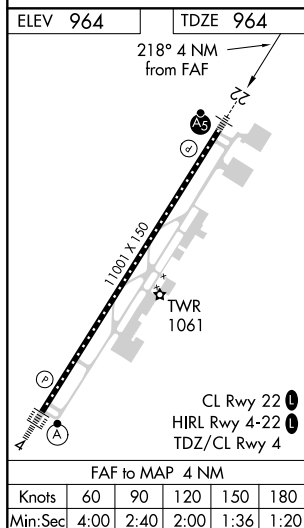
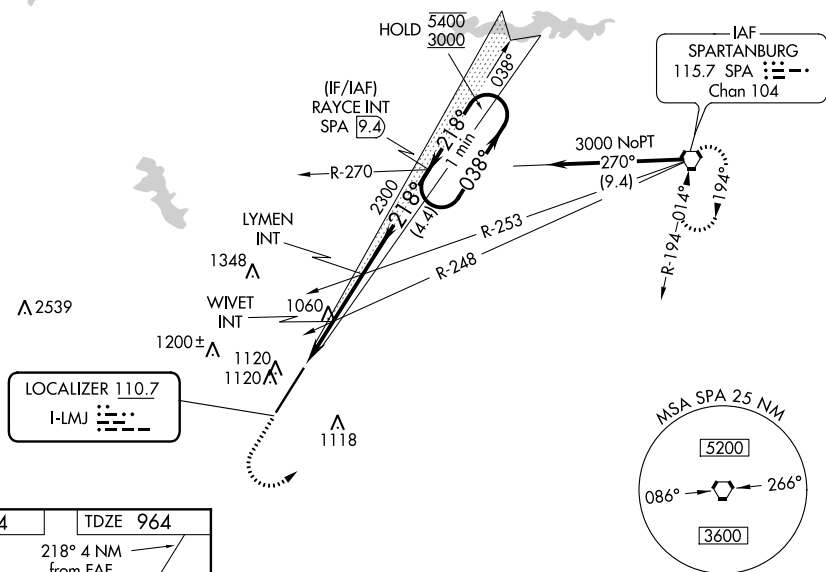
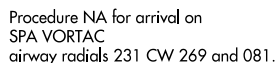


ILS or LOC RWY 22
GREENVILLE SPARTANBURG INTL (GSP)

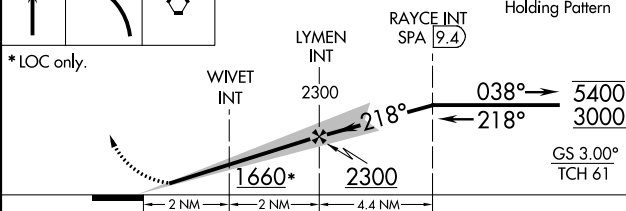
MISSED APPROACH: Climb to 2000 then climbing left turn to 3000 direct SPA VORTAC and hold.


UNICOM
122.95

2000	3000	SPA	VGSI and ILS glidepath not coincident (VGSI Angle 3.00/TCH 76).
------	------	-----	---

One Minute Holding Pattern

* LOC only.



CATEGORY	A	B	C	D
S-ILS 22	1164/24 200 (200-½)			
S-LOC 22	1320/24 356 (400-½)		1320/30 356 (400-⅝)	
 CIRCLING	1440-1 476 (500-1)		1480-1½ 516 (600-1½)	1700-2¼ 736 (800-2¼)