

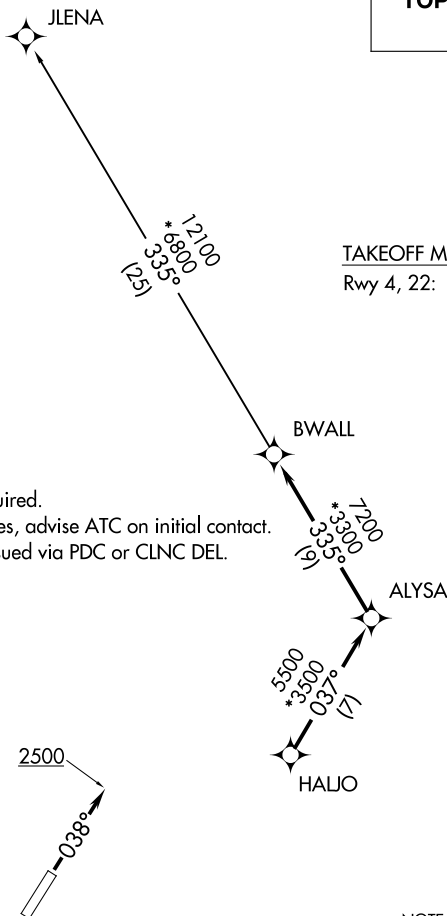
BWALL TWO DEPARTURE (RNAV)

ATIS
 134.25
 GND CON
 121.9
 GREER TOWER★
 120.1 251.15
 UNICOM
 122.95
 GREER DEP CON★
 119.4 350.2

TOP ALTITUDE:
5000

TAKEOFF MINIMUMS
Rwy 4, 22: Standard.

NOTE: For turbojets only.
NOTE: RNAV 1.
NOTE: RADAR required.
NOTE: DME/DME/IRU or GPS required.
NOTE: If unable to accept climb rates, advise ATC on initial contact.
NOTE: Transponder code will be issued via PDC or CLNC DEL.



NOTE: Chart not to scale.

DEPARTURE ROUTE DESCRIPTION

TAKEOFF ALL RUNWAYS: Climb on assigned heading for RADAR vectors to HALJO, then on depicted route to BWALL, thence. . . .

...on JLENA transition. Maintain 5000. Expect clearance to filed altitude within 10 minutes after departure.

TAKEOFF RUNWAY 4: Climb heading 038° to 2500 before turning left.

JLENA TRANSITION (BWALL2.JLENA)