

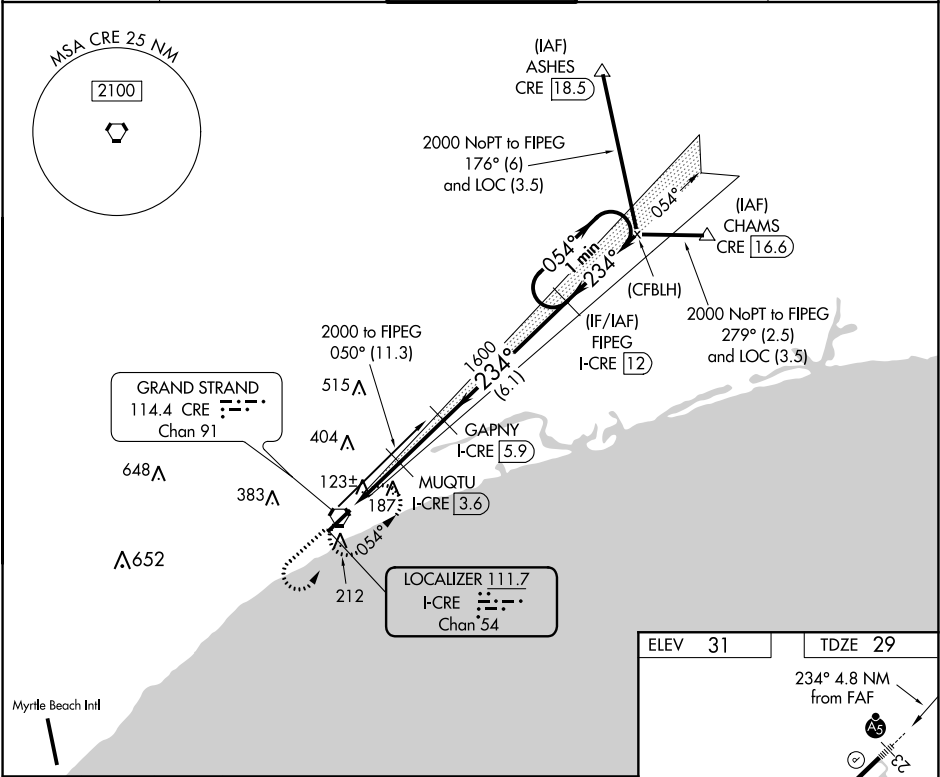
LOC/DME I-CRE <b>111.7</b> Chan <b>54</b>	APP CRS <b>234°</b>	Rwy Idg TDZE <b>29</b> Apt Elev <b>31</b>	<b>5997</b>	ILS or LOC RWY 23 GRAND STRAND (CRE)
---	------------------------	---	-------------	---

When local altimeter setting not received use Myrtle Beach Intl altimeter setting and increase all DA 31 feet and all MDA 40 feet.  
For inoperative MALSR, increase S-LOC 23 Cat C and D visibility to 1. VDP NA with Myrtle Beach Intl altimeter setting. DME required.

MALSR

MISSED APPROACH: Climb to 1000 then climbing left turn to 2000 direct CRE VORTAC and hold, continue climb-in-hold to 2000.

ATIS <b>119.625</b>	MYRTLE BEACH APP CON ★ <b>119.2 350.3</b>	STRAND TOWER ★ <b>124.6 (CTAF) 0 257.6</b>	GND CON <b>121.8 257.6</b>	UNICOM <b>122.95</b>
------------------------	--	---	-------------------------------	-------------------------



1000

2000

CRE

\*LOC only.

\*I-CRE 1.1

\*I-CRE 2.1

\*I-CRE 3.6

\*880

0.9 NM

1.6 NM

2.3 NM

6.1 NM

GAPNY I-CRE 5.9

FIPEG I-CRE 12

One Minute Holding Pattern

234° 054° 2000

GS 3.00° TCH 55

ELEV 31

TDZE 29

234° 4.8 NM from FAF

5997 X 100

TWR 107

110

HIRL Rwy 5-23

REIL Rwy 5