

WAAS CH <b>97727</b> <b>W08A</b>	APP CRS <b>076°</b>	Rwy Idg <b>5004</b> TDZE <b>8</b> Apt Elev <b>10</b>
--	------------------------	--

## RNAV (GPS) RWY 8

MICHAEL J SMITH FIELD (MRH)

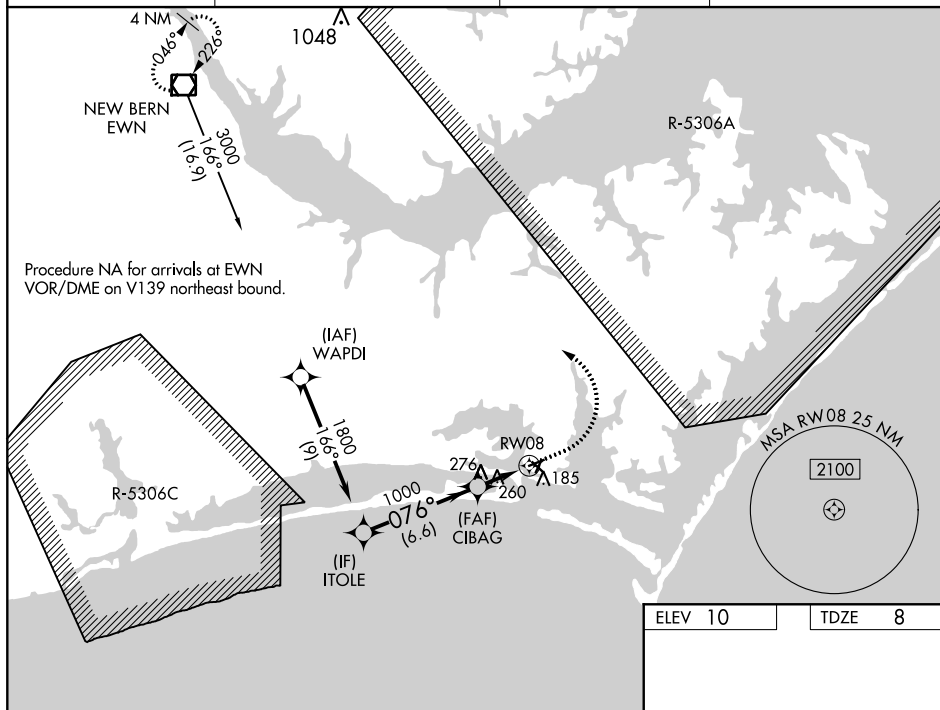
RNP APCH.



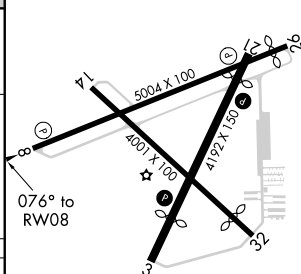
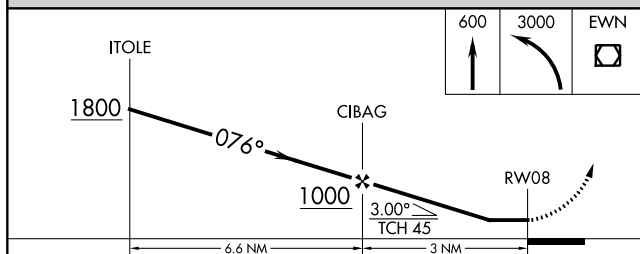
ATC clearance required to penetrate R-5306A and R-5306C.  
Rwy 8, helicopter visibility reduction below 1 SM NA.  
Straight-in Rwy 8 NA at night, Circling Rwy 8, 14, 32 NA at night.


**MISSED APPROACH:** Climb to 600 then climbing left turn to 3000 direct EWN VOR/DME and hold.

ASOS <b>135.375</b>	CHERRY POINT APP CON <b>124.1 268.7</b>	CLINC DEL <b>125.65</b>	UNICOM <b>122.8 (CTAF) 0</b>
------------------------	--	----------------------------	---------------------------------



ELEV 10		TDZE 8
---------	--	--------



CATEGORY	A	B	C	D
LP MDA	520-1	512 (600-1)	520-1 $\frac{3}{8}$	512 (600-1 $\frac{3}{8}$ )
LNAV MDA	540-1	532 (600-1)	540-1 $\frac{1}{2}$	532 (600-1 $\frac{1}{2}$ )
 CIRCLING	540-1	530 (600-1)	580-1 $\frac{1}{2}$ 570 (600-1 $\frac{1}{2}$ )	620-2 610 (700-2)