

| | | |
|-------------|----------|-------------|
| APP CRS | Rwy Idg | 4001 |
| 141° | TDZE | 9 |
| | Apt Elev | 11 |

RNAV (GPS) RWY 14

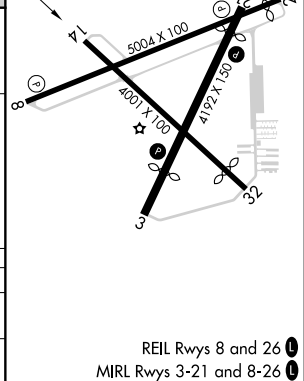
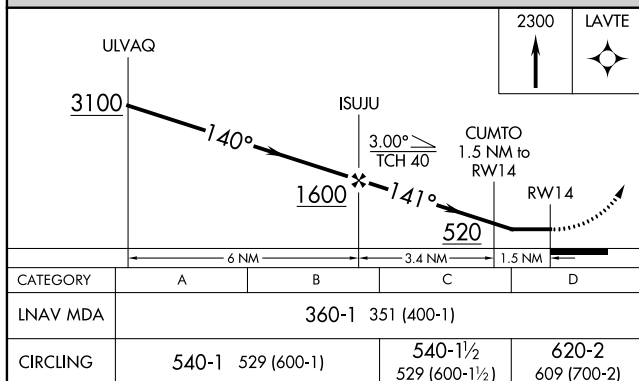
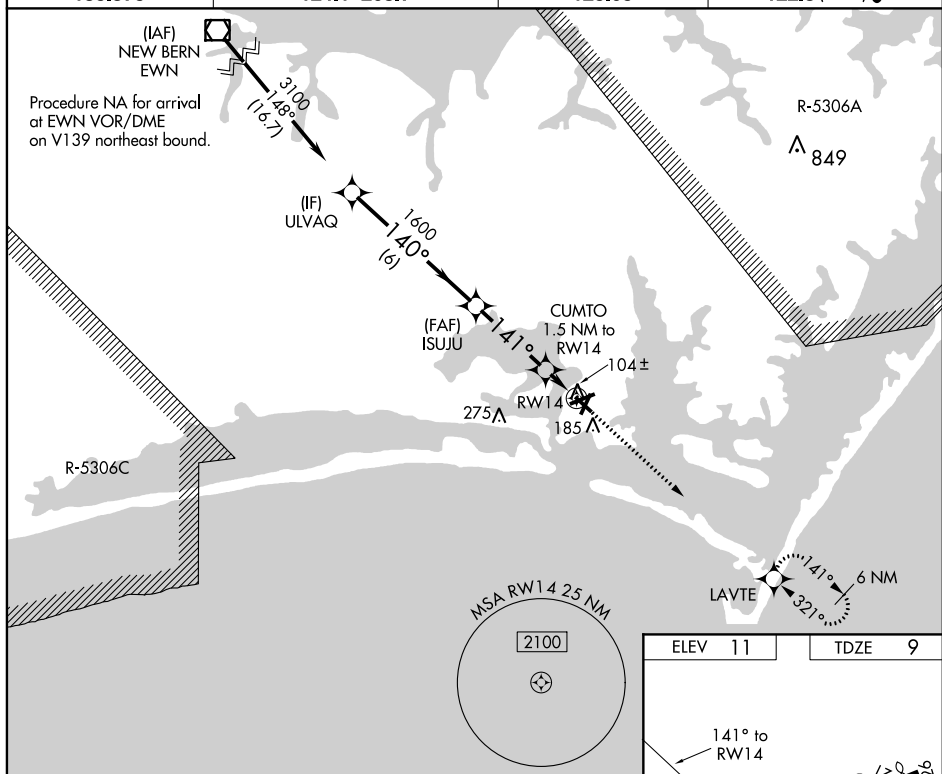
MICHAEL J SMITH FIELD (MRH)

A DME/DME RNP-0.3 NA. ATC clearance required to penetrate R-5306A and R-5306C. When local altimeter setting not received, use Cherry Point MCAS altimeter setting and increase all MDA 40 feet; increase LNAV Cats C and D visibility $\frac{1}{8}$ mile. Straight-in Rwy 14 NA at night, Circling Rwy 8, 14, 32 NA at night. Rwy 8, 14, 32 helicopter visibility reduction below 1 SM NA.

MISSED APPROACH:
Climb to 2300 direct
LAVTE and hold.

ASOS
135.375

CHERRY POINT APP CON
124.1 268.7

CLNC DEL
125.65UNICOM
122.8 (CTAF) **L**

BEAUFORT, NORTH CAROLINA
Amdt 1A 22JUN17

34°44'N-76°40'W

MICHAEL J SMITH FIELD (MRH)
RNAV (GPS) RWY 14

REIL Rwys 8 and 26 **L**
MIRL Rwys 3-21 and 8-26 **L**