

RNAV (GPS) RWY 27

APCH CRS	Rwy Idg	4814
273°	TDZE	228
	Arprt Elev	244

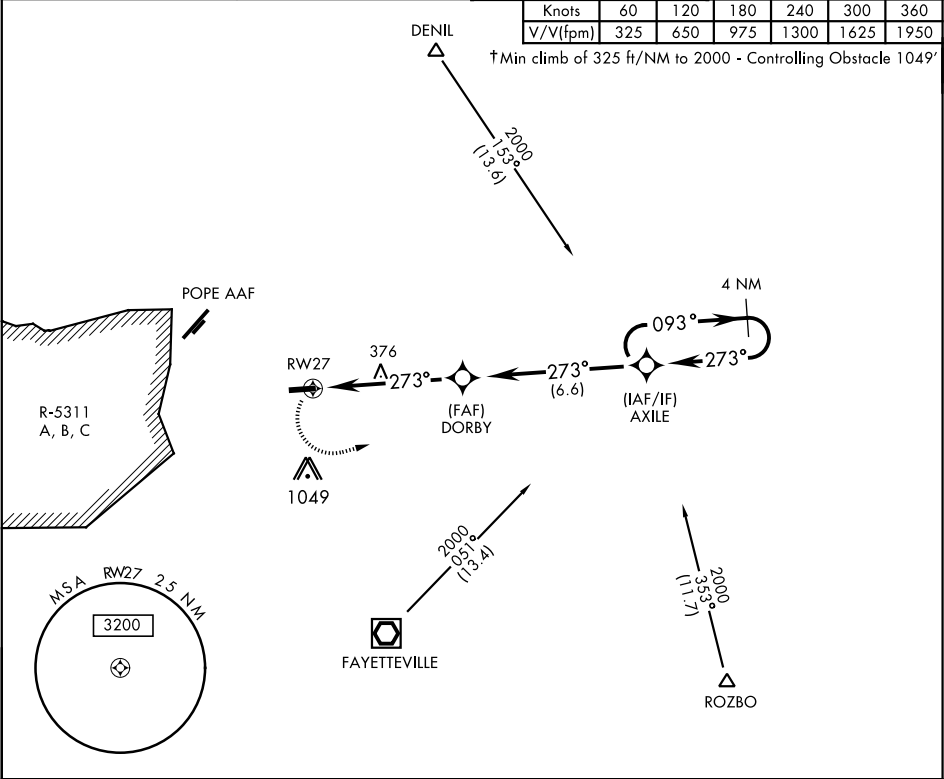
AL-5069 [USA]

SIMMONS AAF (KFBG)

DME/DME RNP-0.3 NA.		† MISSED APPROACH: Climbing left turn to 2100 direct AXILE and hold.	
▼ When local altimeter setting not received, use Pope AAF altimeter setting.			
ATIS 139.25	FAYETTEVILLE APP CON 133.0 290.25	SIMMONS TOWER ★ 125.9 240.625	GND CON 121.9 229.4
		PAR	

Knots	60	120	180	240	300	360
V/V(fpm)	325	650	975	1300	1625	1950

† Min climb of 325 ft/NM to 2000 - Controlling Obstacle 1049'



ELEV 244

TDZE 228

2100

AXILE

Rwy 9 Idg 4306'

Rwy 27 Idg 4814'

380

TWR 418

5011 x 110

0.4% UP

MIRL Rwy 9-27

REIL Rwy 27

273° to RW27

27

4 NM Holding Pattern

2000

093°

273°

2000

3.04°

TCH 36

DORBY

AXILE

1.2 NM to RW27

RW27

5.4 NM

CATEGORY	A	B	C	D
LNAV MDA	680-1	452 (500-1)	680-1 $\frac{3}{8}$ 452 (500-1 $\frac{3}{8}$)	NA
CIRCLING	780-1	536 (600-1)	780-1 $\frac{1}{2}$ 536 (600-1 $\frac{1}{2}$)	NA

RNAV (GPS) RWY 27

SE-2, 31 DEC 2020 to 28 JAN 2021

SE-2, 31 DEC 2020 to 28 JAN 2021