

APCH CRS	Rwy Idg	4306
093°	TDZE	241
	Arpt Elev	244

AL-5069 [USA]

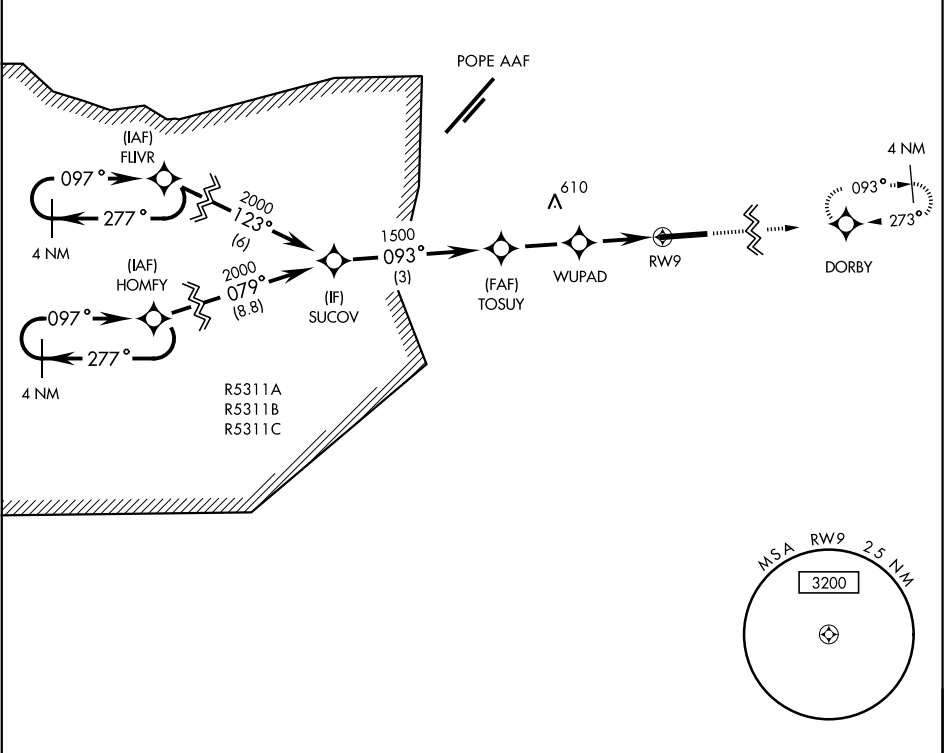
SIMMONS AAF (KFBG)

When local altimeter setting not received, use Pope AAF altimeter setting.
DME/DME RNP-0.3 NA

MISSED APPROACH: Climb to 2000 direct DORBY and hold.

ATIS 139.25	FAYETTEVILLE APP CON 133.0 290.25	SIMMONS TOWER ★ 125.9 240.625	GND CON 121.9 229.4	PAR
----------------	--------------------------------------	----------------------------------	------------------------	-----

Limit final and missed approach airspeed to 90 KIAS



RADAR REQUIRED

CATEGORY	COPTER
LNNAV MDA	680-1/2 439 (500-1/2)

ELEV	244	TDZE	241
Rwy 9 Idg 4306'			
Rwy 27 Idg 4814'			

REIL Rwy 27
MIRL Rwy 9-27

SE-2, 31 DEC 2020 to 28 JAN 2021

SE-2, 31 DEC 2020 to 28 JAN 2021