

WAAS
CH **93641**
W17A

APP CRS
167°

Rwy ldg
TDZE
Apt Elev
2164
2164

RNAV (GPS) RWY 17

ASHEVILLE RGNL (AVL)

RNP APCH

▼

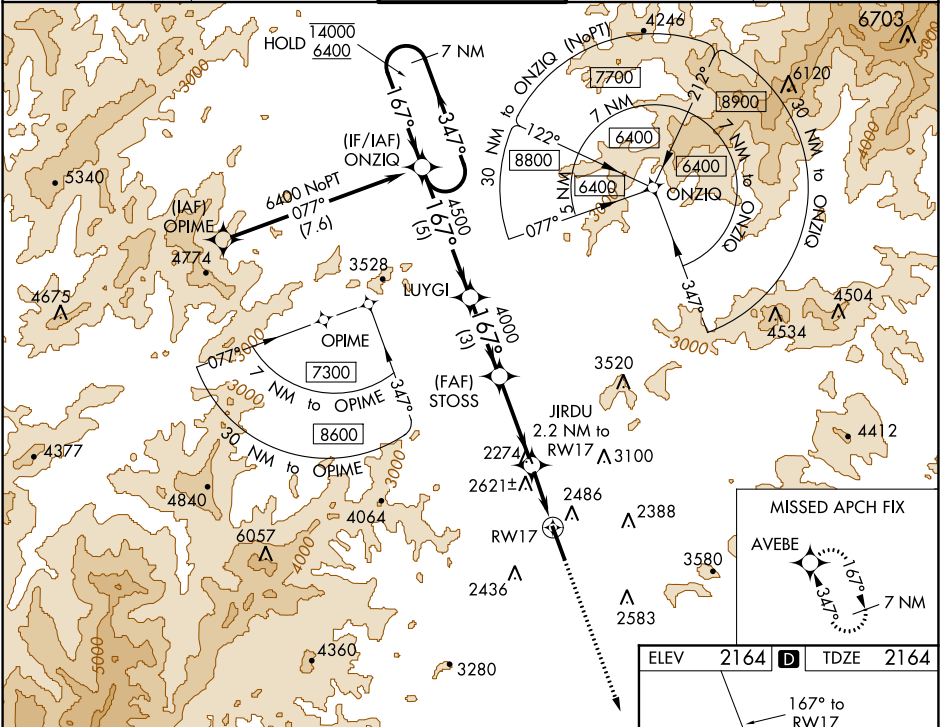
▲

Circling NA west of Rwy 17-35. For uncompensated Baro-VNAV systems, LNAV/VNAV NA below -13°C or above 54°C. For inop ALS, increase LNAV/VNAV all Cats visibility to 2 1/2 SM and increase LNAV Cats C/D visibility to 2 SM.

MALSR

MISSED APPROACH: Climb to 6200 direct AVEBE and hold, continue climb-in-hold to 6200.

ATIS 120.2	ASHEVILLE APP CON* 124.65 269.575	ASHEVILLE TOWER* 121.1(CTAF) 0 257.8	GND CON 121.9	UNICOM 122.95
----------------------	---	--	-------------------------	-------------------------



7 NM Holding Pattern

ONZIQ

LUYGI

STOSS

JIRDU

6200 AVEBE

GP 3.00° TCH 55

5 NM

3 NM

3.4 NM

2.2 NM

*LNAV only.

*2920

RWY 17

CATEGORY	A	B	C	D
LPV DA		2364-1/2	200 (200-1/2)	
LNAV/VNAV DA		2960-13/4	796 (800-13/4)	
LNAV MDA	2880-1/2	716 (800-1/2)	2880-15/8	716 (800-15/8)
CIRCLING	2880-1	716 (800-1)	3460-3 1296 (1300-3)	3720-3 1556 (1600-3)

ELEV 2164 D TDZE 2164

167° to RWY 17

TWR 2223

35