

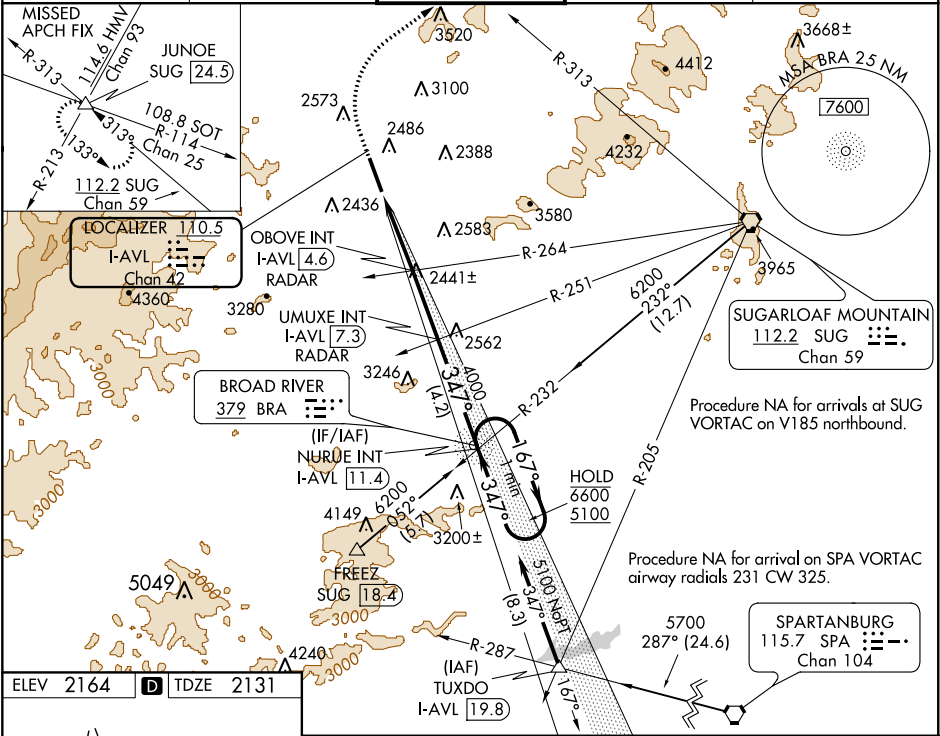
LOC/DME I-AVL	APP CRS	Rwy Idg	8001
<b>110.5</b>	<b>347°</b>	TDZE	<b>2131</b>
Chan 42		Apt Elev	<b>2164</b>

ILS or LOC RWY 35  
ASHEVILLE RGNL (AVL)

**⚠** Circling NA west of Rwy 17-35. For inop ALS, increase S-LOC 35 OBOVE fix minimums Cat C/D visibility to 1½ SM.

**MALSR** MISSED APPROACH: Climb to 2700 then climbing right turn to 6800 on heading 020° and SUG VORTAC R-312 to JUNOE INT/SUG 24.5 DME and hold, continue climb-in-hold to 6800.

ATIS <b>120.2</b>	ASHEVILLE APP CON ★ <b>124.65 269.575</b>	ASHEVILLE TOWER ★ <b>121.1 (CTAF) 0 257.8</b>	GND CON <b>121.9</b>	UNICOM <b>122.95</b>
----------------------	--	--	-------------------------	-------------------------



ELEV 2164 <b>D</b> TDZE 2131		<b>2700</b> 6800 <b>JUNOE</b> <b>UMUXE INT</b> <b>NURUE INT</b> SUG R-312 I-AVL 7.3 RADAR I-AVL 11.4 OBOVE INT I-AVL 4.6 RADAR *LOC only. I-AVL 3.2 RADAR I-AVL 1.5 347° 5.7 NM from FAF HIRL Rwy 17-35 REIL Rwy 17 and 35 FAF to MAP 5.7 NM				One Minute Holding Pattern 167° → 6600 ← 347° 5100 GS 3.00° TCH 56	
Knots 60 90 120 150 180 Min:Sec 5:42 3:48 2:51 2:17 1:54		CATEGORY A B C D				S-ILS 35 2334/24 203 (200-½)	
		S-LOC 35 3140/40 1009 (1000-¾) 3140/55 1009 (1000-1) 3140-2½ 1009 (1000-2½)				CIRCLING 3140-1¼ 976 (1000-1¼) 3140-1½ 976 (1000-1½) 3460-3 1296 (1300-3) 3720-3 1556 (1600-3)	
		OBOVE FIX MINIMUMS (DUAL VOR RECEIVERS OR DME OR RADAR REQUIRED)				S-LOC 35 2700/24 569 (600-½) 2700-1¼ 569 (600-1¼)	
		CIRCLING 2800-1 636 (700-1) 2880-1 716 (800-1) 3460-3 1296 (1300-3) 3720-3 1556 (1600-3)					