

APCH CRS 061°	Rwy Idg TDZE Arpt Elev	9003 281 321
------------------	------------------------------	--------------------

AL-3017 (USAF)

NORTH AF AUX (KXNO)

**T** \* Circling to Rwy 5-23 not authorized.

**MISSED APPROACH:** Climb to 2000 direct BLOYD and hold.

ASOS  
118.525

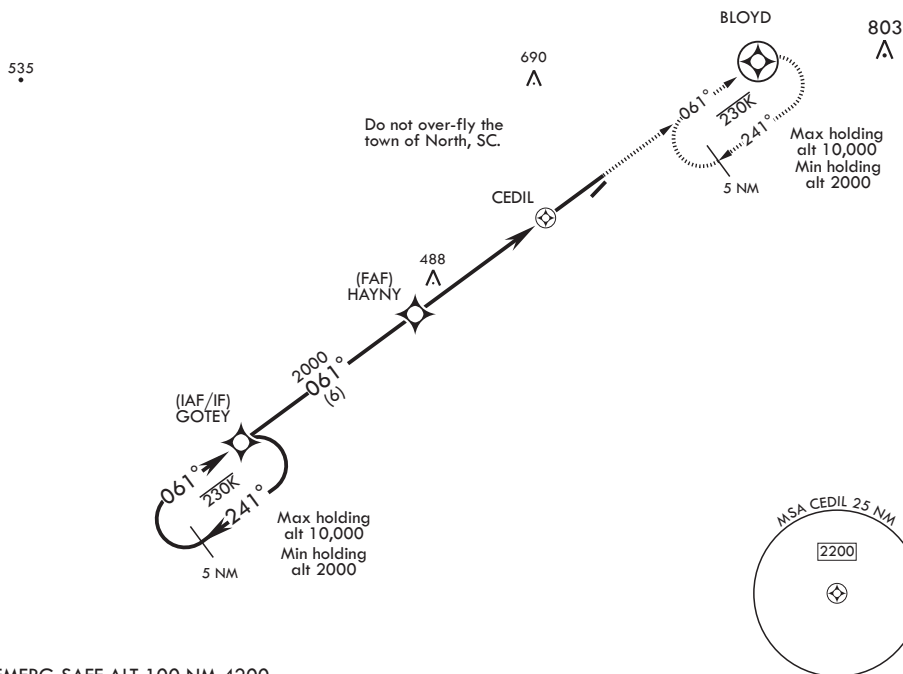
COLUMBIA APP CON/DEP CON  
124.15 338.2

LZ/DZ OPS FAC  
120.475 @ 235.775

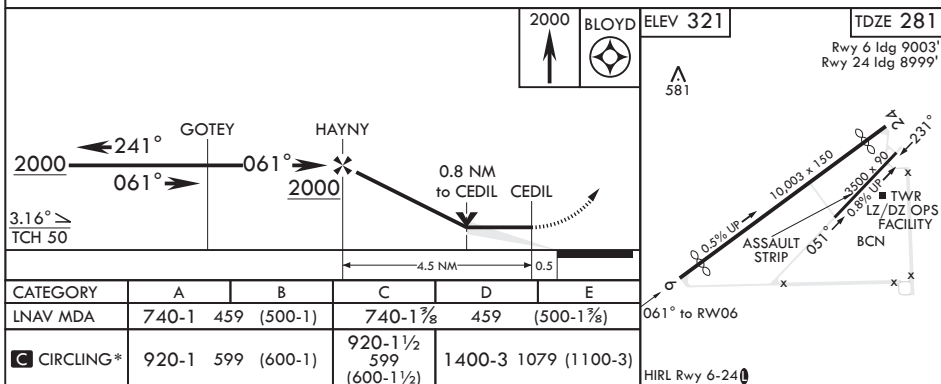
RNP APCH

DME/DME RNP-0.3 NA

**CAUTION:** Uncontrolled  
airspace below 700 ft AGL.



EMERG SAFE ALT 100 NM 4200



NORTH, SOUTH CAROLINA

33°37'N - 81°05'W

NORTH AF AUX (KXNO)

Amdt 1 23APR20

RNAV (GPS) RWY 6

SE-2, 31 DEC 2020 to 28 JAN 2021

SE-2, 31 DEC 2020 to 28 JAN 2021