

VORTAC MMT 113.2 Chan 79	APCH CRS 328°	Rwy Idg 9009 TDZE 243 Arpt Elev 254
--	-------------------------	--

HI-TACAN RWY 32

MC ENTIRE JNGB (KMMT)

T * When ALS inop, increase CAT CDE RVR 60, vis to 1½ miles.

ALSF-1

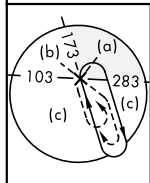
† MISSED APPROACH: Climb to 1100 direct MORRL/1 DME then climbing right turn to 3100 intercept MMT R-058 direct JOGSA/12 DME and hold.

ATIS
327.05

SHAW APP CON
125.4 318.1

MC ENTIRE TOWER ★
132.4 (CTAF) Q 253.5

GND CON
127.625 226.675



Remain within 4 NM of MMT to avoid R6001,
if unable expect 10 min delay for deactivation.

Max holding
alt 8000
Min holding
alt 3100

† Published missed approach requires deactivation of R-6001A/B.

FLORENCE

Florence feeder requires
ATC approval to
avoid R-6002.

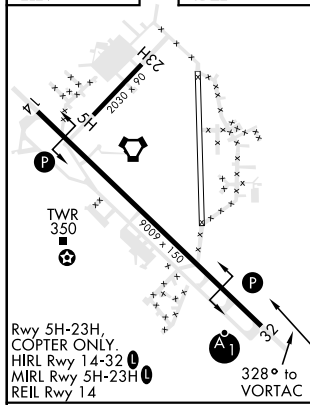
COLLIERS

$$\begin{array}{r} 13,000 \\ - 102 \\ \hline (75.4) \end{array}$$

EMERG SAFE ALT 100 NM 3800

ELEV 25

TDZE 243



Rwy 5H-23H,
COPTER ONLY.
HIRL Rwy 14-32 L
MIRL Rwy 5H-23H L
REIL Rwy 14

FAF to MAP 4.5 NM

Knots	120	140	160	180	200
Min:Sec	2:15	1:56	1:41	1:30	1:21

33°55'N-80°48'W

MC ENTIRE INGB (KMMT)

HI-TACAN RWY 32

Amdt 4 25MAY17