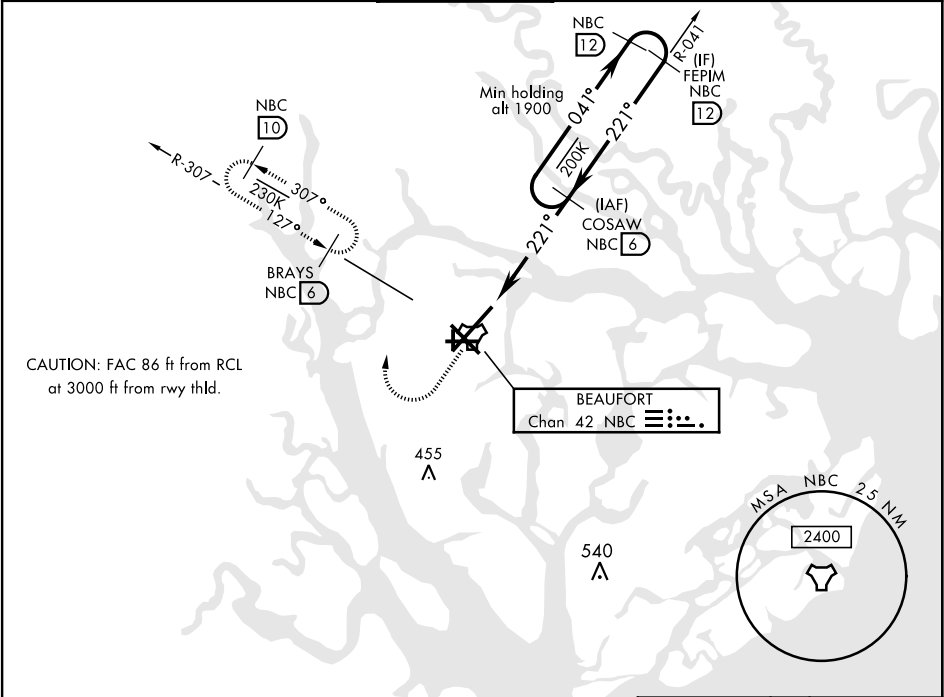
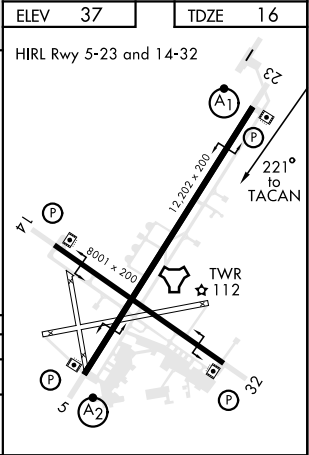
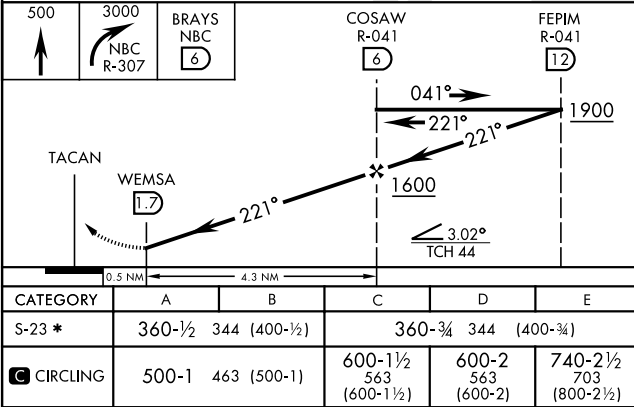


TACAN RWY 23

| | | | | | | |
|---|--|---|------------------------------------|--|----------------------------|---------|
| TACAN NBC Chan 42 | APCH CRS 221° | Rwy ldg 12,202 TDZE 16 Arpt Elev 37 | AL-916 [USN] | BEAUFORT MCAS (MERRITT FLD) (KNBC) | | |
| RADAR required. | | | ALSIF-1 | MISSED APPROACH: Climb to 500, then climbing right turn to 3000, join NBC TACAN R-307 direct BRAYS and hold. Continue climb in hold to 3000. | | |
| *When ALS inop, increase vis CAT ABCDE to 1 mile. | | | | | | |
| ATIS ★ 279.525 | BEAUFORT APP CON (ABV 3000) 125.125 292.125 (3000 and BLW) 123.7 269.125 | | BEAUFORT TOWER ★ 119.05 342.875 | GND CON 128.15 348.625 | CLNC DEL 128.15 254.375 | ASR/PAR |



EMERG SAFE ALT 100 NM 3100



TACAN RWY 23

SE-2, 31 DEC 2020 to 28 JAN 2021

SE-2, 31 DEC 2020 to 28 JAN 2021