


## RNAV (GPS) RWY 5

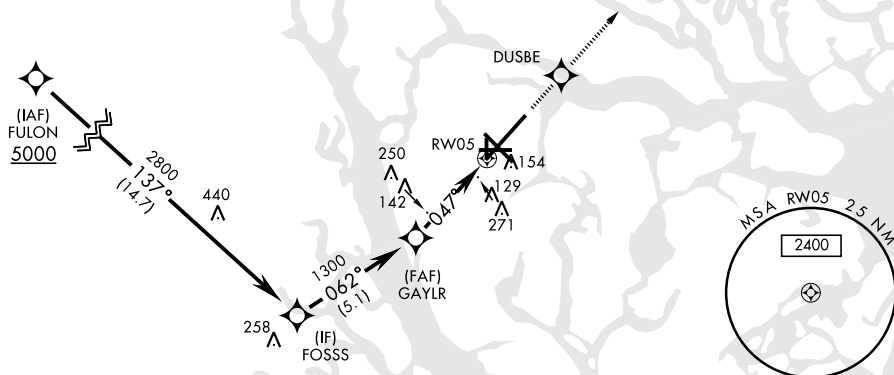
WAAS Chan <b>90095</b> <b>W05A</b>		APCH CRS <b>047°</b>		Rwy Idg <b>12,202</b> TDZE <b>37</b> Arpt Elev <b>37</b>		AL-916 [USN]		RNAV (GPS) RWY 3 BEAUFORT MCAS (MERRITT FLD) (KNBC)	
RNP APCH - DME/DME RNP-0.3 NA						SALSF			
RADAR Required.						MISSED APPROACH: Climb to 3000 direct DUSBE, track 047° to HOWEL and hold. Continue climb in hold to 3000.			
▼ * When ALS inop, increase vis to $\frac{3}{8}$ mile.									
ATIS ★ <b>279.525</b>		BEAUFORT APP CON <b>125.125 292.125</b> ABV 3000 <b>123.7 269.125</b> 3000 and BLW				BEAUFORT TOWER ★ <b>119.05 342.875</b>		GND CON <b>128.15 348.625</b>	
						CLNC DEL <b>128.15 254.375</b>		ASR/ PAR	

**\*\* When ALS inop, increase CAT AB vis to 1 mile, CAT CD to 1 1/8 miles.**

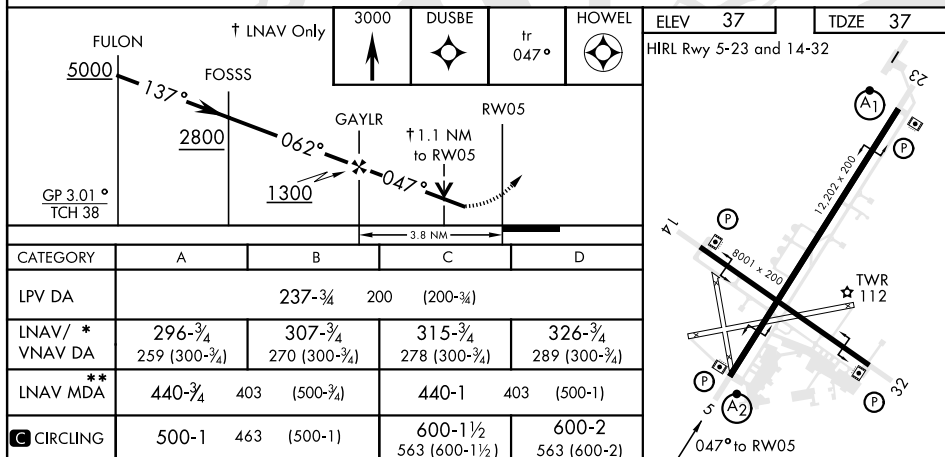
Initial approach segment 230 KIAS Max.  
Intmed approach segment 210 KIAS Max.

For uncompensated Baro-VNAV systems, LNAV/VNAV NA below -15°C (5°F) or above 54°C (130°F).

CAUTION: Group 3 WCH is 18 ft;  
Group 4 is 13 ft.



EMERG SAFE ALT 100 NM 3100



## RNAV (GPS) RWY 5