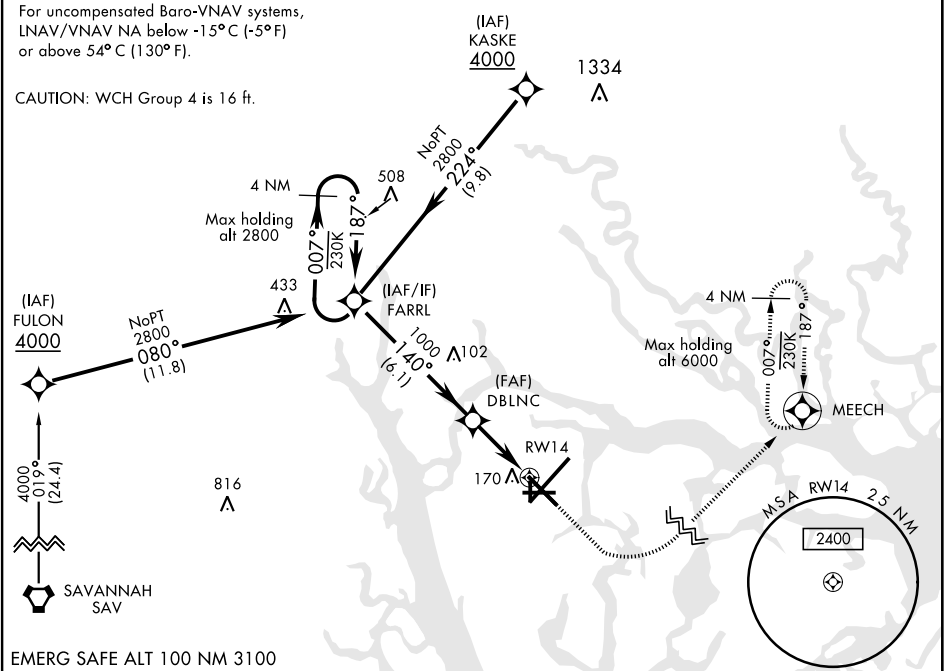


WAAS Chan <b>91240</b> <b>W14A</b>	APCH CRS <b>140°</b>	Rwy Idg TDZE Arpt Elev <b>8001</b> <b>33</b> <b>37</b>	AL-916 [USN]	BEAUFORT MCAS (MERRITT FLD) (KNBC)
--	-------------------------	--	--------------	------------------------------------

RNP APCH - DME/DME RNP-0.3 NA	MISSED APPROACH: Climb to 700, then climbing left turn to 3000 direct MEECH and hold.
RADAR required for arrivals via KASKE or FARRL IAFs.	

ATIS ★ <b>279.525</b>	BEAUFORT APP CON (ABV 3000) <b>125.125 292.125</b> (3000 and BLW) <b>123.7 269.125</b>	BEAUFORT TOWER ★ <b>119.05 342.875</b>	GND CON <b>128.15 348.625</b>	CLNC DEL <b>128.15 254.375</b>	ASR/ PAR
--------------------------	--	---	----------------------------------	-----------------------------------	-------------



<div><div><div>FARRL</div><div>2800</div><div>← 007°</div><div>187° →</div></div><div><div>DBLNC</div><div>140°</div><div>1000</div></div><div><div>GP 3.02°</div><div>TCH 41</div></div></div> <div><div>700</div><div>↑</div></div> <div><div>3000</div><div>↶</div></div> <div><div>MEECH</div><div></div></div>					ELEV 37	TDZE 33
<div><div>HIRL Rwy 5-23 and 14-32</div><div></div></div>						
CATEGORY	A	B	C	D		
LPV DA	233-3/4		200	(200-3/4)		
LNAV/VNAV DA	436-1 3/8		403	(400-1 3/8)		
LNAV MDA	420-1	387 (400-1)	420-1 1/8	387 (400-1 1/8)		
CIRCLING	500-1	463 (500-1)	600-1 1/2 563 (600-1 1/2)	600-2 563 (600-2)		

SE-2, 31 DEC 2020 to 28 JAN 2021

SE-2, 31 DEC 2020 to 28 JAN 2021