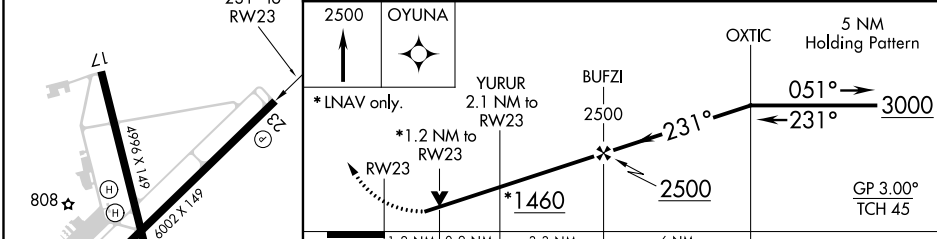
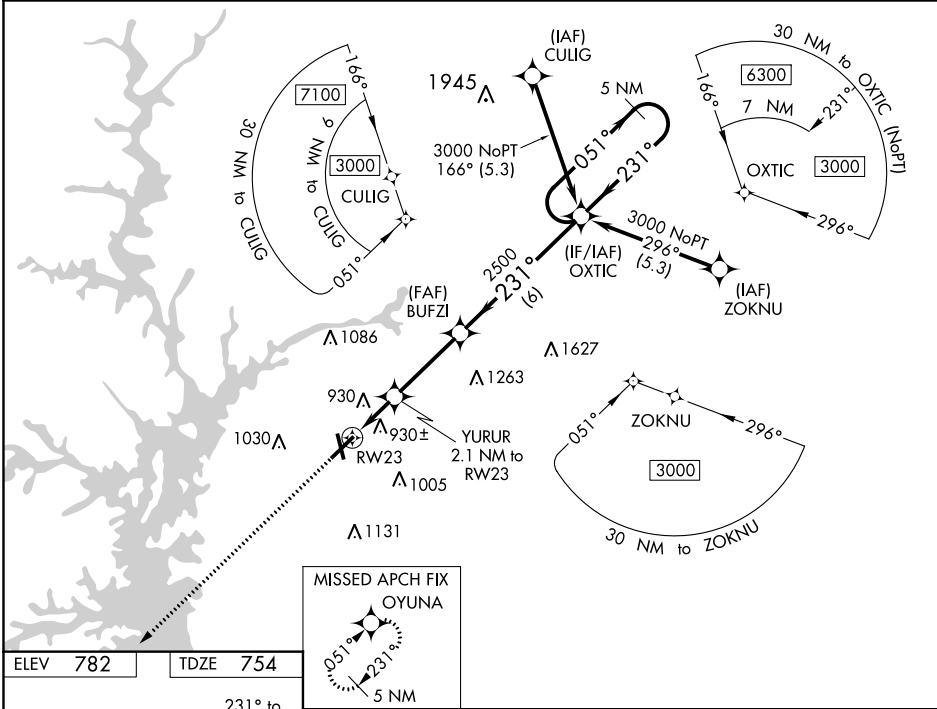


WAAS CH 90540 W23A	APP CRS 231°	Rwy Idg TDZE 754 Apt Elev 782
--	------------------------	---

RNAV (GPS) RWY 23
ANDERSON RGNL (AND)

RNP APCH.	MISSED APPROACH: Climb to 2500 direct OYUNA and hold.
▼ For uncompensated Baro-VNAV systems, LNAV/VNAV NA below -8°C or above 54°C. ▲ Circling Rwy 17, 35 NA at night. Rwy 23 helicopter visibility reduction below ¾ SM NA.	

ASOS 120.675	GREER APP CON ★ 118.8 270.275	CTAF 123.6 0
------------------------	---	------------------------



ELEV 782	TDZE 754
HIRL Rwy 5-23 0	
*LNAV only.	
YURUR 2.1 NM to RW23	
BUFZI 2500	
OXTIC 5 NM Holding Pattern	
3000	
GP 3.00° TCH 45°	
1.2 NM 0.9 NM 3.3 NM 6 NM	
CATEGORY	A B C D
LPV DA	1109-1 355 (400-1)
LNAV/VNAV DA	1218-1 464 (500-1 1/2)
LNAV MDA	1180-1 426 (400-1) 1180-1 426 (400-1 1/4)
CIRCLING	1260-1 1320-1 1440-1 1500-2 478 (500-1) 538 (600-1) 658 (700-1 3/4) 718 (800-2 1/4)

SE-2, 31 DEC 2020 to 28 JAN 2021

SE-2, 31 DEC 2020 to 28 JAN 2021