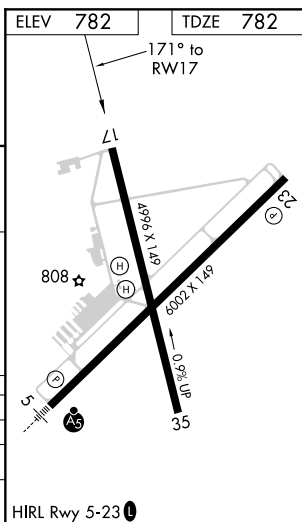
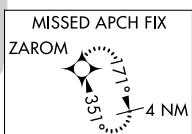


RNAV (GPS) RWY 17
ANDERSON RGNL (AND)

MISSED APPROACH: Climb to 2500 direct ZAROM and hold.

CTAF
123.6 **L**



CATEGORY	A	B	C	D
LP MDA	1200-1	418 (500-1)	1200-1 $\frac{1}{8}$	418 (500-1 $\frac{1}{8}$)
LNAV MDA	1220-1	438 (500-1)	1220-1 $\frac{1}{4}$	438 (500-1 $\frac{1}{4}$)
C CIRCLING	1260-1 478 (500-1)	1320-1 538 (600-1)	1440-1 $\frac{3}{4}$ 658 (700-1 $\frac{3}{4}$)	1500-2 $\frac{1}{4}$ 718 (800-2 $\frac{1}{4}$)

SE-2, 31 DEC 2020 to 28 JAN 2021

SE-2, 31 DEC 2020 to 28 JAN 2021